



Senior Phase Prospectus 2024 - 2025

A place like

Study at College whilst at School

- + UHI Moray works closely with local authorities, our partners and secondary schools to deliver a wide range of qualifications to school pupils.
- + Senior phase pupils in S4, S5 and S6 can study a College course as part of your normal school timetable.
- + Our aim is to ensure young people have access to work-relevant educational experience to enable them to make informed and ambitious choices about the career route that's right for them.
- + Check out our Frequently Asked Questions at www.moray.uhi.ac.uk/school-faq



no other



CHI | **MORAY
MOIREIBH**



Welcome to UHI Moray

Our courses help you progress in your chosen career path by developing life and work skills.

They aim to: -

- + broaden your curriculum choices;
- + enrich your educational experiences;
- + help you to develop knowledge and skills for employment and further study, such as analysing and problem solving;
- + help ease your transition from school to further learning or employment;
- + help you with life skills such as responsibility, attendance, punctuality and independent travel

Contents

Contact Us	5
Types of Courses and Study Modes	6
Levels of Study	7
Foundation Apprenticeships	9
Advanced Studies	10
Courses	
British Sign Language	11
Business, Administration & Accounting	13
Computing and Digital Media	15
Construction	17
Creative Industries	19
Education and Childcare	21
Engineering	25
ESOL	29
Hairdressing and Beauty Therapy	31
Health and Social Care	33
Hospitality and Tourism	35
Integrative Healthcare	37
Science and the Environment	39
Social Sciences	45
Sport and Fitness	51
Entry Requirements and Progression Routes	53
How to Apply	55
Campuses	57
Your Students' Association	60
Student Support	61
Careers and Employability	67
Glossary	69
Course index	71



Contact Us

Welcome to UHI Moray's Senior Phase Prospectus.

Cindy and I are here to support you whilst you make your subject choices.

You will probably have been involved in some of the presentations that we have been giving in schools throughout Moray, but if not, then we are here to answer any questions that you may have.

We are very much looking forward to welcoming you to UHI Moray.

Jackie Andrews
Head of Academic Partnerships

Cindy Gee
Foundation Apprenticeship Co-ordinator

01343 576000
moray.uhi.ac.uk/schools
moray.uhi.ac.uk/fa



@SchoolsUHIMoray



@UHIMoray

Types of courses

If you're still at school, UHI Moray could help you get a head start into further or higher education, or the world of work.

Our Senior Phase Programme allows school students in S4, 5 or 6 to attend one day a week, often with transport provided.

You could access a subject that's not available at your school, try out a course for size, or do a Foundation Apprenticeship (available for S5 and S6) alongside your Nationals and Highers.

If you're about to leave school you might be thinking of studying for a degree, or taking a shorter course which will help you enter the world of work. We offer a flexible structure in most subjects - so you can begin with a one-year NC course, for example, then progress to HNC, HND or degree level study if it's right for you.

Full time courses generally require you to attend classes for about 20 hours a week, though subjects vary.

We also offer a Modern Apprenticeship programme, where students study towards nationally recognised qualifications while in work.

In some areas we also offer access and introduction courses that can help you make the leap from school to college or university.

Study modes

Face to Face

These classes are face to face on campus by a lecturer with student participation.

Depending on which course you choose to study you may be based at our Moray Street, Linkwood Technology Centre, the Biblical Garden campuses.

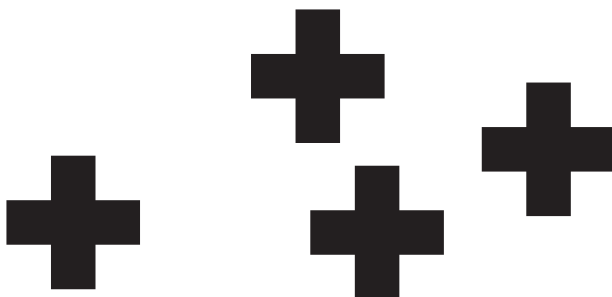
You may also study at Out of the Darkness Theatre Company and other partner organisations.

Online

Pupils learn through online study, supported by lecturers via our virtual learning environment.

Blended

Pupils learn through a combination of online and face to face delivery. Online may be via video conference tutorials with a lecturer and/or online study via our virtual learning environment Brightspace.



Levels of study

UHI Moray is different from traditional universities and colleges.

We offer highly flexible, multi-level access to further and higher education. That means it's easy to join and leave at just about any stage in your academic, professional or personal journey.

We work closely with industry to keep our courses up to date and relevant for the constantly changing employment environment, this includes Foundation Apprenticeships.

No matter how many semesters or years you spend at UHI Moray, each course you take will offer a clear pathway for progression to the next level, or to the world of work.



Skills for Work (sƒw)

These courses focus on employability skills needed for success in the workplace. The courses offer learners opportunities to learn these skills through a variety of practical experiences that are linked to vocational areas. Skills for Work courses help young people to develop their self-confidence. They also aim to provide a very positive learning experience. A chance to work on practical skills that relate to the world of work provides real benefits to learners.

Foundation Apprenticeships (FA)

These aim to give young person experience of the world of work and gain industry knowledge while you're still at school. There are various subjects to choose from and all were designed in partnership with employers

National 5 and Highers

S5 and S6 pupils can apply for National 5 and Higher courses at College that may not be available on their school curriculum.

Further Education (FE)

FE includes courses with a strong work focus, like National Qualifications (NQs), National Certificates (NCs) and Scottish Vocational Qualifications (SVQs). NQs and NCs prepare students for work and act as stepping-stones to higher education, while SVQs provide opportunities to gain qualifications while in work.

National Progression Award (NPA)

Delivered by partnerships between schools, colleges and employers, NPAs assess skills in specialist vocational areas.

SCQF Levels 1 - 6

Postgraduate courses

These courses, including MA, MSc and a number of postgrad diploma courses, are intended for people who've already gained a degree.

SCQF Levels 10+

Higher Education (HE)

HE is the term for study beyond school and FE level. HE courses include Higher National Certificates and Diplomas, and BA, BSc and BEng Honours degrees.

If you have the right entry requirements you can go straight into any HE course with us, but if you need to, you can take FE courses first to prepare.

Degree Modules

These courses give you a taste of what studying at degree level is like by allowing you to study a module from one of our degree courses.

Professional Development Awards (PDA)

PDAs are flexible qualifications and can be used to either extend or broaden professional and vocational skills.

SCQF Levels 7 - 10



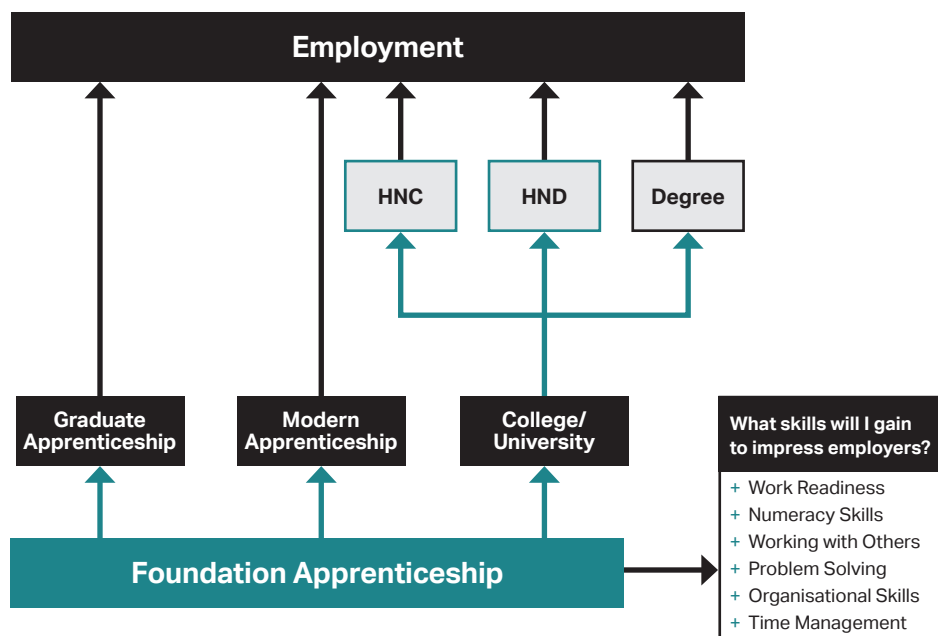
Foundation Apprenticeships

FAs are work-based learning opportunities for young people moving into their senior phase. The aim is to give young people earlier experience of the world of work, by introducing them to industry much earlier, increasing their awareness of employer requirements and opening up their career choices.

FAs are delivered over 1 or 2 years depending on the specific framework. S6 pupils may be able to complete the programme in 1 year.

All Scottish universities now recognise SCQF Level 6 Foundation Apprenticeships (FA) as part of their entry criteria at the same level as Scottish Highers.

Visit www.moray.uhi.ac.uk/fa for details.



Our Frameworks

UHI Moray is offering Foundation Apprenticeships for session 2024/25 in:

- + Automotive
- + Business Skills
- + Construction Skills
- + Creative and Digital Media
- + Engineering
- + Food and Drink Technologies
- + Hospitality
- + Social Services (Children and Young People)*
- + Social Services and Healthcare*

* You will be required to undergo a Protection of Vulnerable Groups (PVG) check as you will be working with vulnerable individuals.

Advanced Studies

Pupils moving into S6 now have greater choice and flexibility over subjects to study.

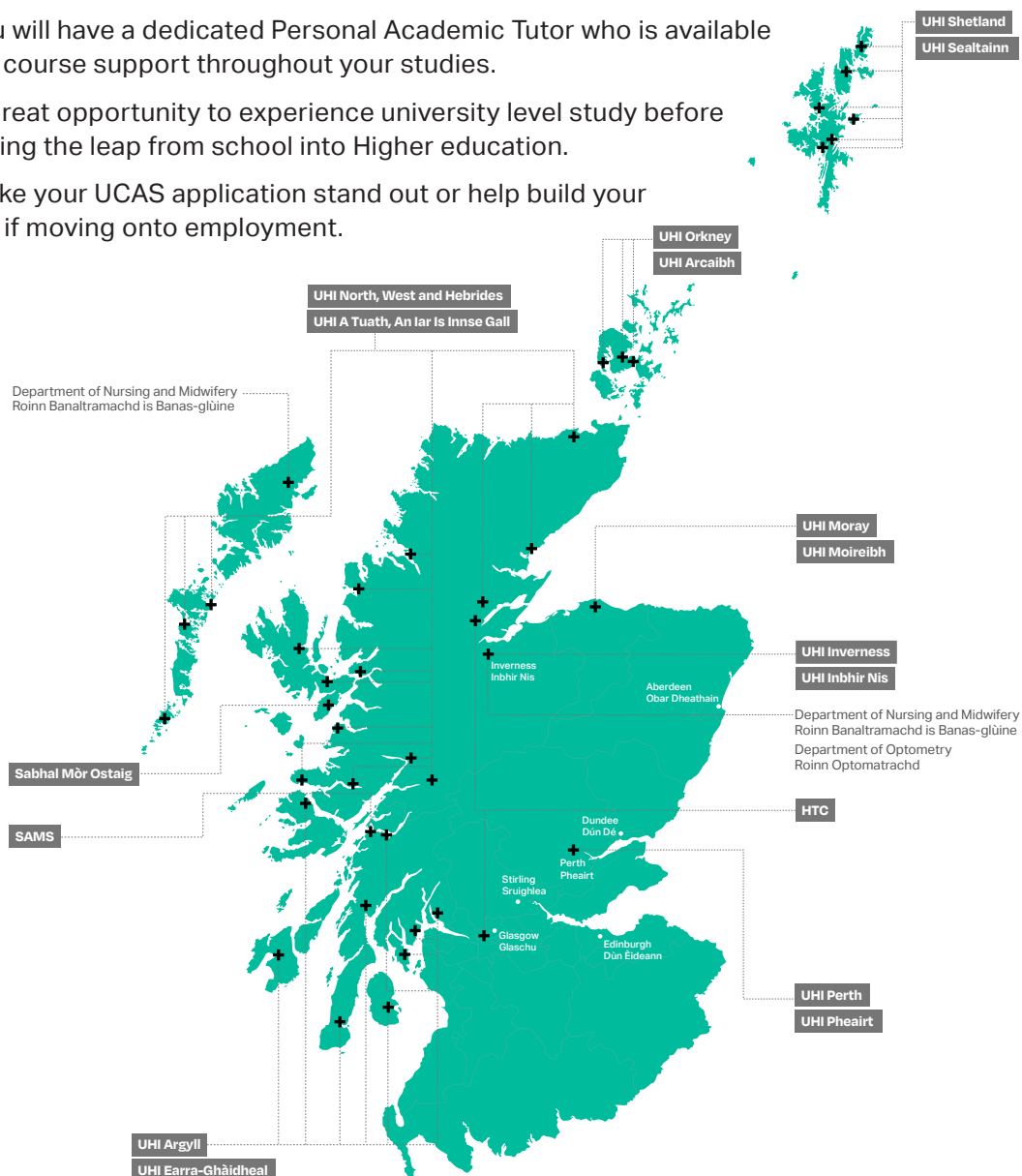
Along with our partners across UHI, there are a wide range of Degree Level Modules available to you that can be studied at anytime from anywhere.

These modules are fully online and will be delivered from one of 10 institutions that make up the University of the Highlands and Islands.

You will have a dedicated Personal Academic Tutor who is available for course support throughout your studies.

A great opportunity to experience university level study before taking the leap from school into Higher education.

Make your UCAS application stand out or help build your CV if moving onto employment.





British Sign Language

Interests

Language

Culture

Accessibility

Deaf Awareness
Communication

Inclusivity

**Sign
Language**

British Sign Language

SCQF Level 4

S4

S5

S6

This course will give you good all-round knowledge, skills and understanding of the history and use of British Sign Language (BSL) and has been designed to appeal to both hearing and deaf learners.

This course will help you develop your language skills and enable you to communicate with British Sign Language users in various contexts. You will also develop your understanding of how sign languages work, and how they differ from spoken and written languages. It will also enhance your understanding of Scotland's Deaf Community, its history, people and culture.

This course includes:

- + an understanding of simple and straightforward information expressed in British Sign Language
- + the ability to express information in a simple and straightforward monologue using British Sign Language
- + conversational skills using British Sign Language
- + the ability to adapt to the regional varieties of British Sign Language
- + the ability to use appropriate cultural conventions in British Sign Language
- + understanding and use of a visual and spatial language modality (ie. sign linguistics)
- + knowledge of specific historical events that have shaped the development of British Sign Language
- + knowledge of the diverse experiences of members of the Deaf Community

Entry requirements

- + Application form and interview

Progression

On completion of this course you may progress onto:

- + Further BSL qualifications

The knowledge and experience acquired will not only enable you to work with the deaf, but will also develop transferable skills.

Day/Time

Wednesday 9.30am - 2.15pm

Duration

1 year

As a BSL lecturer and a native BSL user I support students to reach their potential. It is fantastic working with students and seeing them achieve so much.

The benefits of learning BSL is that a new skill can potentially become a second or other language.



Dominic Ravenscroft

British Sign Language Lecturer



Business, Administration & Accounting

Interests

Accounting

Entrepreneurship

Payroll

Finance

Business

Human Resources

Auditing

**Planning and
organisation**

**Project
Management**

Foundation Apprenticeship: Business Skills

SCQF Level 6

S5

S6

This FA in Business Skills helps you discover if a career in business is right for you.

On successful completion you will achieve a Foundation Apprenticeship (Group Award) in Business Services at SCQF Level 6, which includes:

- + Four units from the SVQ in Business and Administration at SCQF Level 6
- + A unit in Contemporary Business Issues at SCQF Level 6
- + A National Progression Award in Business with Information Technology at SCQF Level 6
- + A Work Placement Unit at SCQF Level 6

Entry requirements

- + You must have Higher Business Management or be working towards it

Progression

On completion of this course you may progress onto:

- + HNC Business
- + HNC Accounting
- + HNC Administration and Information Technology
- + BA (Hons) Business Management

You can also enter employment or look for Modern Apprenticeship opportunities.

Day/Time

Wednesday 9.30am - 4pm.

- + Semester 1 – college based
- + Semester 2 – work placement based

Duration

1 year

PDA Business & Finance

SCQF Level 7

S6

This PDA covers the key areas of Business and Finance which will enable you to build the skills and knowledge needed to progress to a higher level of study in the Business and Finance subject areas.

You will:

- + Develop your knowledge and skills required for employment in a business environment
- + Develop study skills
- + Develop transferable skills including Core Skills to the levels demanded by employers
- + Adopt an innovative and creative approach to your work and be able to respond quickly to the challenges posed by changes in the business environment
- + Prepare you for progression to further study

Units include:

- + Marketing: An Introduction
- + Recording Financial Transactions
- + Using Financial Accounting Software
- + Digital Marketing Communications

Entry requirements

- + National 5 Maths

Progression

On completion of this course you may progress onto:

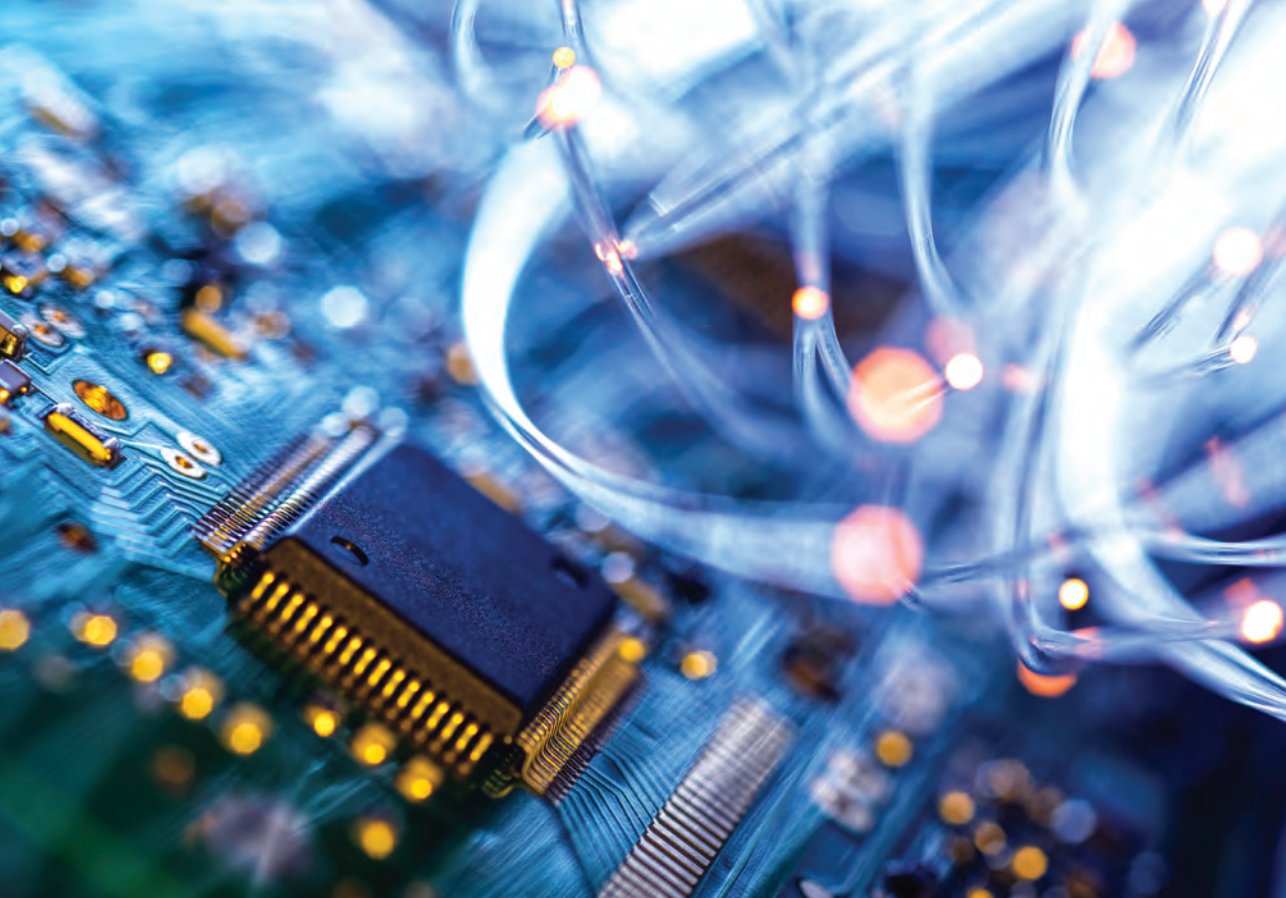
- + HNC Business
- + HNC Accounting

Day/Time

Wednesday 9.15am - 2.15pm

Duration

1 year



Computing and Digital Media

Interests

Creative

**Web
design**

Video and audio

**Computing
and gaming**

**Problem
solving**

Programming

**Cyber
security**

NPA Cyber Security

SCQF Level 5

S4

S5

S6

Cyber Security is the body of technologies, processes and practices designed to protect networks, computers, programs and data from attack, damage or unauthorised access.

The focus on this NPA stems from the recognition that cyber security is essential for the success of the virtual economy, education and community, and introduces you to the fundamental knowledge and skills required in cyber security.

There are some written assessments which include report writing, presentation and multiple choice, and a practical component incorporated where required.

Entry requirements

+ Application form and interview

Progression

On completion of this course you may progress onto:

- + NC Computing and Digital Media (SCQF Levels 5 and 6)
- + National 5 Computing Science (with other necessary qualifications)

Day/Time

Wednesday 9.30am - 2.15pm

Duration

1 year

NPA Digital Media

SCQF Level 5

S4

S5

S6

This course allows you to focus on the unique knowledge and skills that are required for capturing and editing sound, image, and video.

During the course you will have the opportunity to follow a development lifecycle from planning through to design, and then on to creation and editing.

There are some written assessments relating to the theory behind Audio, Moving Images and Still Images. The practical element of the NPA requires written detail relating to the planning through to the creation of the portfolio.

Entry requirements

+ Application form and interview

Progression

On completion of this course you may progress onto:

- + NC Computing and Digital Media (SCQF Levels 5 and 6)

Day/Time

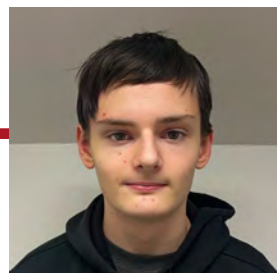
Wednesday 9.30am - 2.15pm

Duration

1 year

I enjoy college, it is a more relaxed way of learning, you don't have an end of year exam that can be stressful, and you work at your own pace.

This course in three words has been challenging, comfortable and enjoyable.



Harry Green
Keith Grammar S5
NPA Cyber Security



Construction

Interests

Brickwork

Plumbing

Joinery

Planning

Construction

Health
and Safety

Carpentry

Electrical
Installation

Foundation Apprenticeship: Construction Skills

SCQF Level 4

S4**S5****S6**

This course will enable you to develop knowledge and understanding of a range of construction disciplines as well as technical and transferable skills to support your employment prospects.

A project involving local employers will be carried out using the skills from all the trades that you will learn.

This course includes:

- + Brickwork: An introduction
- + Carpentry and Bench Joinery: An introduction
- + An introduction to Plumbing and Electrical Skills
- + Understanding Industry
- + Personal Development: Self and Work

Entry requirements

- + Application form and interview

Progression

On completion of this course you may progress onto:

- + Built Environment: College Certificate (SCQF Levels 5)

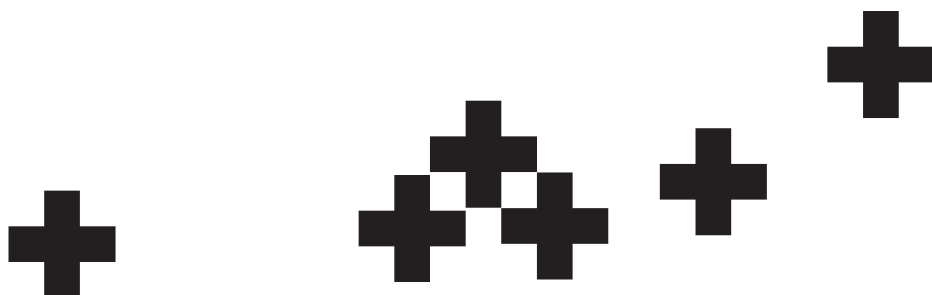
You can also enter employment or look for Modern Apprenticeship opportunities.

Day/Time

Wednesday 9.30am - 2.15pm

Duration

1 year



I want to do something do with building when I leave school. I would also like to be a footballer, but want to have a trade on the side.

I have enjoyed learning about painting - there's more to it than you think, you learn about how to apply many coats to give a good finish. I'd never done that before. I also enjoyed the wood working - I have done a bit before with my Granda - he is handyman. This course is very good if you want to learn new skills. It's been fun, challenging, and interesting. The teaching has been good - you get treated like an adult.



Brodie Finlayson
Forres Academy S4
FA Construction Skills



Creative Industries

Interests

Visual Arts

Creative

Drama

Expression

Design

Singing

Culture

Artist

**Dance and
Choreography**

**Script
Writing**

Foundation Apprenticeship: Creative & Digital Media

SCQF Level 6

S5

S6

This FA in Creative and Digital Media helps you to discover what a career in the creative industries is like, and if it's right for you. Supported by Out of the Darkness Theatre Company (ODTC), you will try out creative roles, shadow experienced professionals, or do a special project. You'll build the practical skills and experience you need for this industry.

On successful completion you will achieve a Foundation Apprenticeship (Group Award) in Creative and Digital Media at SCQF Level 6, which includes:

- + A National Progression Award in Creative and Digital Media at SCQF Level 6
- + Four work-based units from the Diploma in Creative Digital Media at SCQF Level 7
- + A media project unit at SCQF Level 6

Entry requirements

- + Evidence that you can work at National 5 in English. IT skills would be beneficial.

Progression

On completion of this course you may progress onto:

- + Modern Apprenticeship in Creative and Digital Media
- + HND Visual Communications (within UHI)
- + BA (Hons) Visual Communication and Design (within UHI)

Day/Time

Wednesday 9.30am - 2.15pm

Duration

2 years

Applicants wishing to study over one year will undertake workplacement from April to June

NPA Acting and Performance

SCQF Level 6

S5

S6

Whether you are involved in youth theatre, want the opportunity to perform or interested in a career in the performing arts, this course will build your confidence and communication skills to prepare you for your next steps.

You will prepare for a performance in front of a live audience, work creatively with text and develop voice, movement acting and stagecraft skills. You will also work co-operatively in teams, respond to direction, develop self awareness and a professional attitude.

This course includes:

- + Theatre Skills in Performance:
You will study the roles of the director/actor and be introduced to stagecraft. You will apply the skills and knowledge in a production in front of an audience and evaluate the process
- + Professional Theatre in Context:
You will investigate two styles/genres of professional theatre and the elements within them. Explore the role of the theatre production team in creating a production and evaluate the effectiveness of two contrasting professional theatrical productions

Entry Requirements

- + Group audition

Progression

Successful completion provides access to UAL Performing and Performance Diploma or HNC Acting and Performance

Day/Time

Wednesday 9.30am - 2.15pm

Duration

1 year



Education and Childcare

Interests

Child
Development

Nurturing

Education
and Teaching

Childcare

Learning

Children and
Young People

Kindergarten

Playwork

Skills for Work: Early Education & Childcare

SCQF Levels 4/5

S4

S5

S6

These courses introduce you to the knowledge and experience of practical skills required to work in the Childcare industry. You will work at the level required for the Occupational Standards for Children's Care, Learning and Development, and Playwork.

These courses include:

- + Child Development
- + Working in Early Education and Childcare
- + Play in Early Education and Childcare
- + Care of Children

Entry requirements

Entry to SCQF Level 4:

- + Evidence that you can work at National 4 in 3 subjects including English.

Entry to SCQF Level 5:

- + Evidence that you can work at National 5 in 3 subjects including English.

Progression

On completion of these courses you may progress onto:

- + Foundation Apprenticeship Social Services Children & Young People (SCQF Level 6) (S5 & S6 Pupils)
- + NQ Playwork and Early Education and Childcare (SCQF Level 5)
- + NC Early Education and Childcare (SCQF Level 6) (with other necessary qualifications)

Day/Time

Wednesday 9.30am - 2.15pm

Duration

1 year

Foundation Apprenticeship: Social Services (Children and Young People)

SCQF Level 6

S5

S6

This FA in Children and Young People helps you discover what a career working with young people would be like, and if it's right for you. You'll try different job roles, shadow experienced staff, or do a special project. You'll build the practical skills and experience you need for this industry.

You will be assessed throughout your FA Social Services - Children and Young People.

On successful completion you will achieve a Foundation Apprenticeship (Group Award) in Social Services - Children and Young People at SCQF Level 6, which includes:

- + Four units from the SVQ in Social Services - Children and Young People at SCQF Level 6
- + A National Progression Award in Social Services - Children and Young People at SCQF Level 6

Entry requirements

- + Evidence that you can work at National 5 in English.

Progression

On completion of this course you may progress onto:

- + Modern Apprenticeship in Social Services (Children and Young People)
- + SVQ Social Services (Children and Young People) (SCQF Level 6 and 7)
- + HNC Childhood Practice

Day/Time

Wednesday 9.30am - 4pm

Duration

1 or 2 years

Applicants wishing to study in one year must have two free days in their timetable each week

Getting Ready For A Career In Teaching

SCQF Level 7

S6

This part-time course will provide you with the knowledge and understanding of current educational practices in relation to ASN, behavioural issues and the development of language, literacy and numeracy.

Ideally suited for those considering a career in primary teaching or related fields, this HNC Cluster* gives you a taste of a full-time course in Education, Childcare or a selection of learning opportunities relevant to Initial Teacher Education.

It will also provide a valuable foundation for any student wishing to apply to either an initial teacher 4-year programme, the PDGE programme at UHI or HNC study.

**Course is built up of three modules from the HNC Childhood Practice.*

Entry requirements

- + Evidence that you can work at SCQF level 7
- + Higher English or equivalent qualification is desirable but not essential

Progression

Upon successful completion of this course, you may decide to complete a full HNC award in a related subject including:

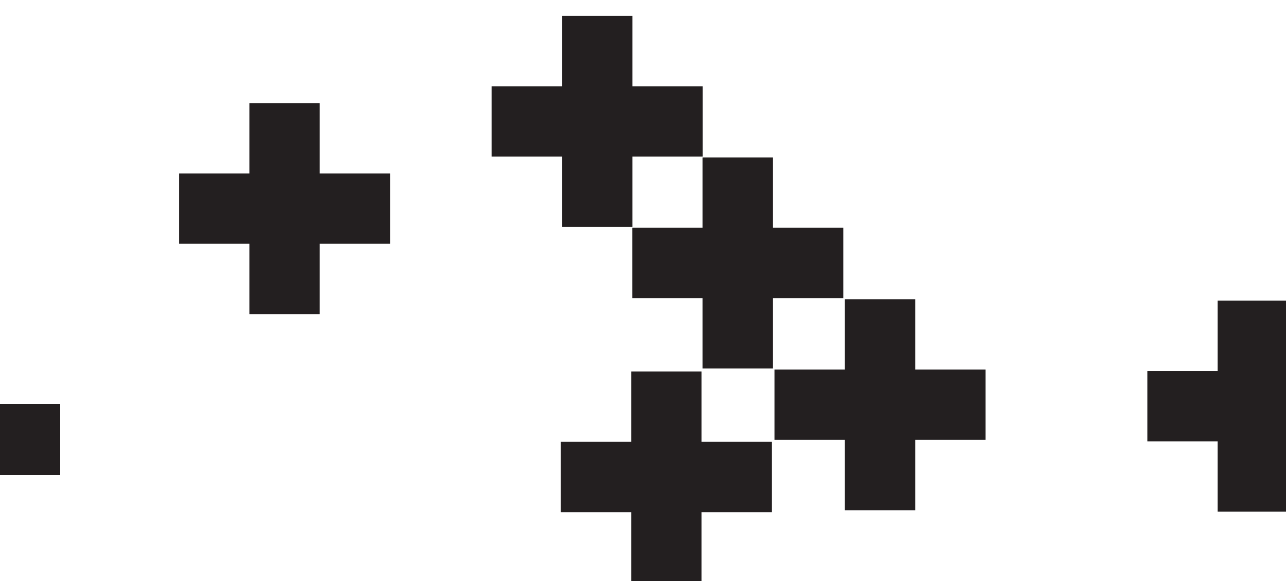
- + HNC Childhood Practice
- + HNC Social Services – which would provide SSSC registration

Day/Time

Wednesday 9.30am - 2.15pm including extra time for self-directed studies

Duration

1 year







Engineering

Interests

Electronics

Electrical

Automotive

Manufacturing

Fabrication

**Renewable
Energy**

Mechanical

Welding

Engineering

Foundation Apprenticeship: Automotive

SCQF Level 4

S4

S5

S6

This course is designed to provide you with the basic practical, theory and key skills in motor vehicle.

The course comprises:

- + Employability skills in the Motor Industry
- + Health and Safety aspects through undertaking a range of workshop activities removal and replacement of certain components
- + Full inspection for pre-delivery of new cars
- + Learn to valet car to acceptable standard
- + Online research to ascertain the work involved in running large car dealership, visit local companies
- + Small project work involving modification of systems on a vehicle, eg. fitting extra lights, reversing sensors or perhaps a towbar will be undertaken
- + Work-based Skills Challenge

Entry requirements

- + Application form and interview

Progression

On completion of this course you may progress onto:

- + City & Guilds Level 2 Diploma in Light Vehicle Maintenance and Repair Principles (SCQF Level 5)

You can also enter employment or look for Modern Apprenticeship opportunities.

Day/Time

Wednesday 9.30am - 2.15pm

Duration

1 year

Practical Engineering

SCQF Level 5

S4

S5

S6

This course is designed to provide an introduction to basic Electrical, Electronic and Mechanical engineering disciplines to those who have no prior knowledge of the subject.

By combining these three engineering disciplines this course provides a varied and diverse introduction to practical craft level activity through laboratory and workshop based units.

Entry requirements

- + 3 National 4s including English and Maths OR
- + Evidence that you can work at National 5 in English, Maths and a Science subject

Progression

On completion of this course you may progress onto:

- + Foundation Apprenticeship in Engineering (in S5)
- + Other Engineering courses at SCQF Levels 5 and 6

Day/Time

Wednesday 9.30am - 2.15pm

Duration

1 year

I chose this course to give me experience and qualifications to be an electrician. This course complements the practical electronics subject I take at school. It goes more in-depth about the electrical components. Once I leave school looking to get a modern apprenticeship. My advice to anyone considering to do this course is "DO IT" it is fun and you get provided with all your PPE, meet new people from other schools. I have really enjoyed it. Would do it again! I'm in my happy place, I'd do this everyday if I could.



Taylor Cameron
Elgin Academy S5
Practical Engineering

PDA Engineering

SCQF Level 7

S6

This course is the only one of its kind in Scotland and has been designed to develop the practical Engineering skills needed to work within the Engineering sector required for the 21st century economy.

You will:

- + Develop knowledge and understanding for the operation and maintenance of complex systems
- + Develop the knowledge and understanding required to apply the basic principles of operating mediums in engineering system
- + Develop a knowledge and understanding of the principles of operation and applications of a range of control mechanism in complex systems
- + Develop knowledge and understanding of material properties and testing and to apply basic material selection concepts for a range of components

Units include:

- + Pneumatics and Hydraulics
- + Thermofluids
- + Engineering Measurement and System Monitoring
- + Material Selection

Entry requirements

- + National 5 Maths
- + National 5 Science or Engineering Science

Progression

On completion of this course you may progress onto:

- + NC Engineering Systems (SCQF Level 6)
- + HNC Engineering Systems (with other necessary qualifications)

Day/Time

Wednesday 9.30am - 2.15pm

Duration

1 year





English for Speakers of Other Languages

Interests

Vocabulary

Language

Emails

English

Communication

Grammar

Bi-lingual

Culture

National 5 and Higher English for Speakers of Other Languages (ESOL)

SCQF Levels 5 and 6

S4

S5

S6

Providing a pathway to college or university you can study our interactive ESOL qualifications at National 5 or Higher as an alternative to English.

Developing your reading, writing, listening and speaking skills to a high level, while being less literature based than traditional English classes these courses will cover:

- + a wide range of interesting and varied topics including business, health and sport, the environment, social media and technology, and other topical issues
- + language skills which will help you with your other subjects at school such as essay writing techniques, how to write formal emails and reports
- + techniques to better understand and analyse reading texts while learning more advanced vocabulary

The Higher will also look at professional presentations, university referencing, writing a review and blog and will expand your vocabulary range to an advanced level.

Entry requirements

+ Application form and language test

Progression

On completion of the National 5 you may progress onto:

+ Higher English for Speakers of Other Languages (ESOL)

On completion of the Higher you may progress onto:

+ A college or university course

+ Employment

Day/Time

National 5:

Wednesday 1.45pm - 4.30pm

Higher:

Wednesday 9.30am - 12.30pm

Duration

1 year

My advice to anyone considering ESOL is to go for it.. It will really help boost your confidence if you are bi-lingual and English isn't your first language. The highlight of college has been coming out of my comfort zone, it is a new way of learning and I've enjoyed how the courses are specifically tailored to what you want to do.



Katherine Tyczka
Elgin Academy S5
Higher ESOL





Hairdressing and Beauty Therapy

Interests

Barbering

Nails

Colour

Styling

Make-up

Hairdressing

Waxing

Creative

**Lashes
and Brows**

Introduction to Hairdressing

SCQF Level 4

S4

S5

S6

This course provides an introduction to hairdressing, focusing on employability skills and attitudes that will help to prepare you for the workplace.

You will:

- + gain practical experience of general salon duties to support stylists and assist with client care.
- + research and compile a storyboard/moodboard to help create a finished style.
- + develop skills in shampooing, conditioning and drying hair
- + explore the creative side of hairdressing

This course includes:

- + Intro to basic hairdressing skills
- + Research, create and complete a look
- + Hair styling for the digital world
- + Role of a salon assistant

Entry requirements
+ Application form and interview

Progression
On completion of this course you may progress onto:

- + Introduction to Foundation Hairdressing (SCQF Level 4)
- + Foundation Hairdressing (SCQF Level 5) (with other necessary qualifications)

Day/Time
Wednesday 9.30am - 2.15pm

Duration
1 year

Beauty Therapy

SCQF Level 4

S4

S5

S6

This course consists of four beauty therapy related modules which will enable you to develop vocational skills to improve employment prospects by developing a range of supporting, transferable skills.

You will:

- + Learn how to work safely and professionally in the salon
- + Discover skin care and pressure point massage techniques
- + Recognise different coping strategies and the differing modes of assistance that are available
- + Carry out practical treatments on the hands and feet (including nail care, massage, with nail painting and nail art techniques)

This course includes:

- + Safe and healthy work practices in Beauty Therapy
- + Stress relief techniques
- + Coping strategies and building resilience
- + Basic hand and foot care

Entry requirements
+ Application form and interview

Progression
On completion of this course you may progress onto:

- + Beauty and Aesthetic Therapies (SCQF Level 5)

Day/Time
Wednesday 9.30am - 2.15pm

Duration
1 year



Health and Social Care

Interests

Allied Health

Volunteering

**Social
Services**

**Health
Service**

Social Work

Community

**Health
Promotion**

Nursing

Professionalism

Foundation Apprenticeship: Social Services & Healthcare

SCQF Level 6

S5

S6

This FA in Social Services and Healthcare will help you discover what a career in care would be like, and if it's right for you. You'll attend a work placement in a care setting and shadow experienced staff. You'll build the practical skills , knowledge and experience you need for this industry.

On successful completion you will achieve a Foundation Apprenticeship (Group Award) in Social Services and Healthcare at SCQF Level 6, which includes:

- + Four units from the SVQ in Social Services and Healthcare at SCQF Level 6
- + A National Progression Award in Social Services and Healthcare at SCQF Level 6

Entry requirements

- + Evidence that you can work at National 5 in English.

Progression

On completion of this course you may progress onto:

- + Employment as a support worker in social care
- + Modern Apprenticeship in Social Services & Healthcare- work based
- + SVQ Social Services & Healthcare (SCQF Levels 6 and 7) - work based
- + HNC Social Services
- + HNC Healthcare Practice
- + Year 1 of Nursing (depending on other school grades)

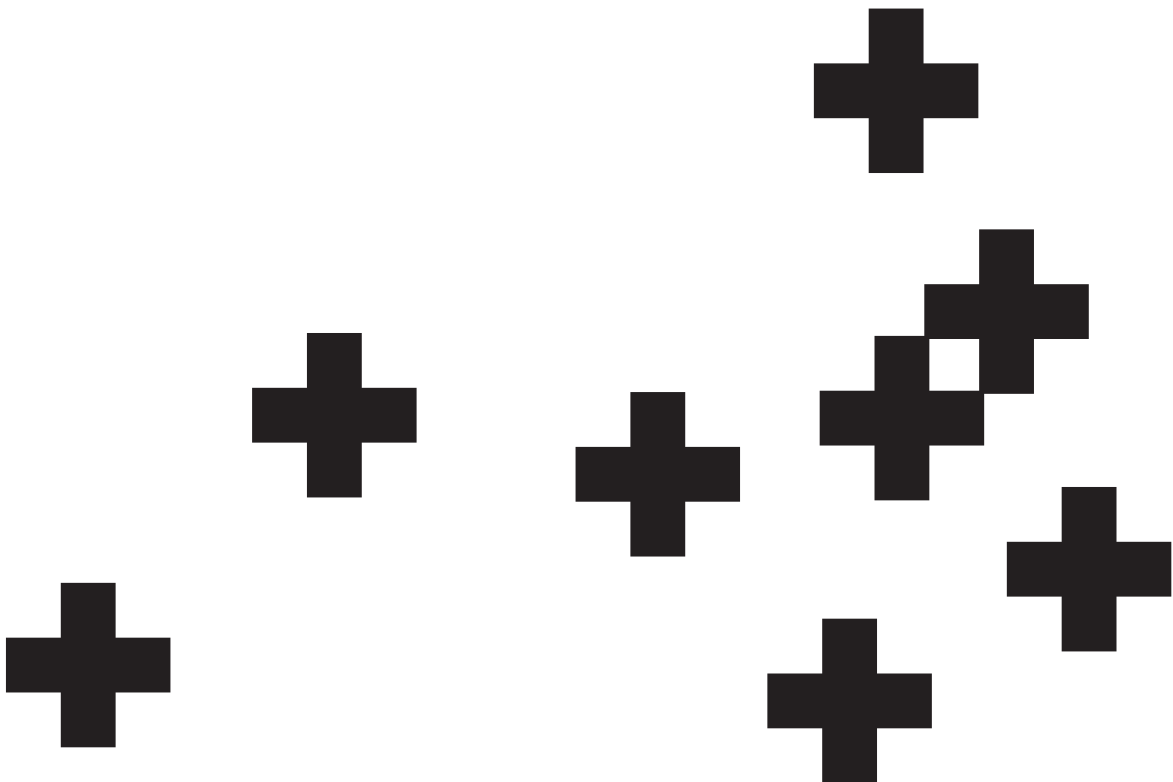
Day/Time

Wednesday 9.30am - 4pm

Duration

1 or 2 years

Applicants wishing to study in one year must have two free days in their timetable each week





Hospitality and Tourism

Interests

Cooking

Baking

Food

Hospitality

Events

Front of House

Drinks

NPA Bakery

SCQF Level 4

S4

S5

S6

The NPA Bakery has been designed to equip you with the skills, experience and knowledge required for employment within the bakery industry.

The craft bakery industry currently has a skills shortage, the public are requesting better quality and varieties of breads and flour confectionery made by traditional methods, and there is now a rise in the artisan baker and flour confectioner.

The NPA is also suitable for those returning to work, upskilling or transferring from other sectors.

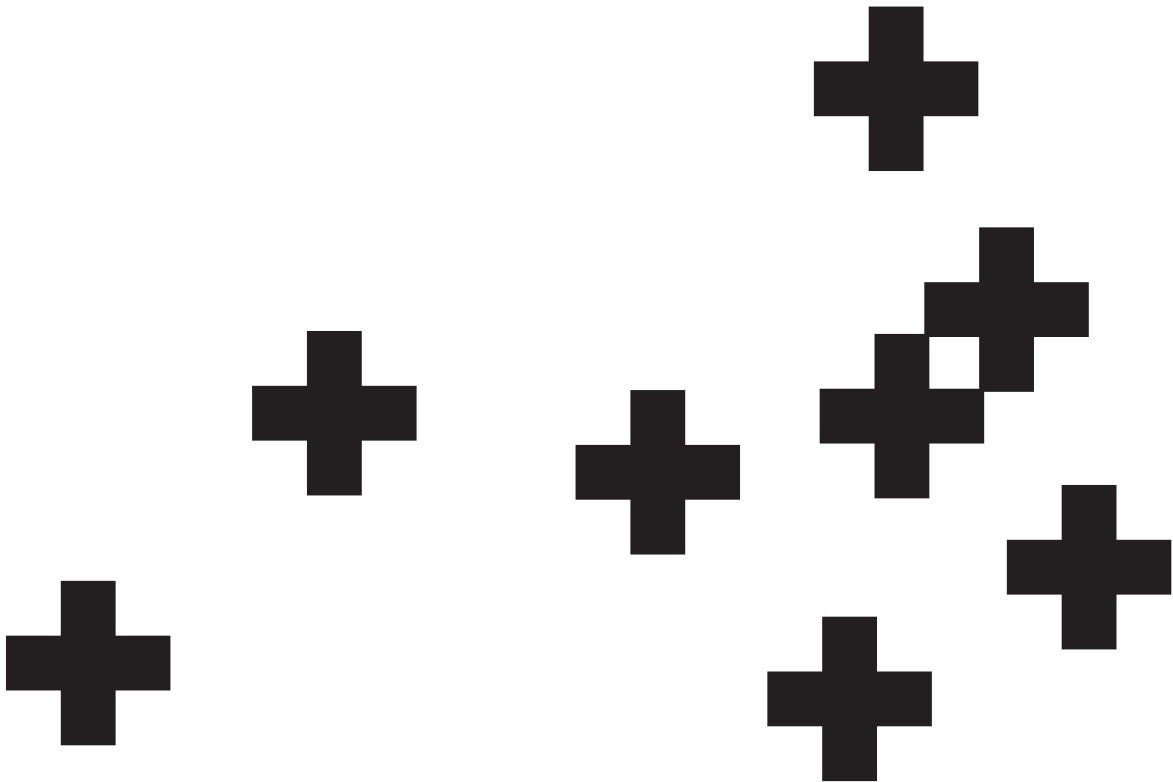
Entry requirements
+ Application form and interview

Progression
Successful completion may allow entry to
+ NC in Hospitality Operations (SCQF Level 5)

Students may also be able to enter employment as a trainee Baker or Commis chef.

Day/Time
Wednesday 9.30am - 2.15pm

Duration
1 year





Integrative Healthcare

Interests
Massage

**Complementary
Therapies**

Physiology

Health

Reflexology

Well-being

**Sports
Therapy**

Aromatherapy

Sports Therapy Fundamentals

SCQF Level 4

S4

S5

S6

This course consists of key areas within the field of Sports Therapy. You will learn about the human body, what it is capable of, how to prevent and recover from injuries, and the professional manner in which Sports Therapy is delivered.

The course comprises:

- + Musculoskeletal Anatomy and Physiology
- + Exercise Principles and Testing
- + Prevention and Management of Injuries
- + Professional Standards

Entry requirements

- + Application form and interview

Progression

On completion of this course you may progress onto:

- + Access to Integrative Healthcare and Sports Therapy (SCQF Level 6)
- + HNC Soft Tissue Therapy (SCQF Level 7)
- + BA (Hons) Integrative Healthcare (with other necessary qualifications)

Day/Time

Wednesday 9.30am - 2.15pm

Duration

1 year

This course is ideal for someone who is interested in being able to rehabilitate sport injuries. You will learn about the anatomy & physiology of the human body and how to help prevent sport injuries.

It will lead into a HNC in Soft Tissue Therapy and HND in Sports Therapy with career paths such as Sport Therapist, Sport Clubs, Rehabilitation Clinics or Self- Employed. This course is practical, interactive, and fun.



Scott Hamilton
Sports Therapy Lecturer



Science and the Environment

Interests

Genomics

Chemistry

Cells

Health

Biology

Anatomy

Research

Brewing

Environment

National 5 Biology

SCQF Level 5

S4

S5

S6

This course is ideal if you have an interest in developing skills, knowledge and understanding of biology relevant to life sciences within our society.

Through an experimental and investigative approach you will develop knowledge and understanding of key areas of biology ranging from cellular to whole organism and ecosystems. Biodiversity and interdependence are also covered, exploring the processes leading to evolution, food security and ethical issues.

Course content includes:

- + Cell biology
- + Biology: Multicellular organisms
- + Biology: Life on Earth

Entry requirements

- + 2 National 4s

Progression

On completion of this course you may progress onto:

- + Higher Biology
- + Higher Human Biology
- + Laboratory Science (SCQF Level 6)

Day/ Time

Online, with fortnightly drop ins at UHI Moray

Duration

1 year

National 5 Chemistry

SCQF Level 5

S4

S5

S6

Chemistry is the study of matter at the level of atoms, molecules, ions and compounds.

These substances are the building blocks of life and all of the materials that surround us.

Chemists play a vital role in the production of everyday commodities with chemistry research and development being essential for the introduction of new products. This course is ideal for those intending to pursue a career in science, food, health, textile or manufacturing industries.

An experimental and investigative approach is used to develop knowledge and understanding of chemical concepts.

Course content includes:

- + Chemical changes and structure
- + Nature's chemistry
- + Chemistry in society

Entry requirements

- + 2 National 4s

Progression

On completion of this course you may progress onto:

- + Higher Chemistry
- + Laboratory Science (SCQF Level 6)

Day/ Time

Online, with fortnightly drop ins at UHI Moray

Duration

1 year

National 5 Environmental Science

SCQF Level 5

S4

S5

S6

This course is ideal for those wishing to develop an understanding of the impact environmental science makes on our lives, the lives of others, on the environment, and on society. You will develop a broad selection of ideas within environmental science, including environmental issues and possible solutions to preventing or reversing environmental degradation, and sustainable practices.

Through an experimental and investigative approach you will explore:

- + the Earth's systems, atmosphere, hydrosphere, geosphere and biosphere
- + sustainability and sustainable development through food, water and energy security
- + issues relating to waste generation and its management
- + biodiversity and interdependence

Course content includes:

- + Living environment
- + Earth's resources
- + Sustainability

Entry requirements

- + 2 National 4s

Progression

On completion of this course you may progress onto:

- + Higher Environmental Science
- + Higher Biology
- + Higher Human Biology
- + Laboratory Science (SCQF Level 6)

Day/ Time

Online, with fortnightly drop ins at UHI Moray

Duration

1 year

Higher Biology

SCQF Level 6

S5

S6

This course enables you to develop and apply knowledge and understanding of biology, particularly an understanding of DNA and how the structure of the genome leads to the basis of evolution and biodiversity.

You will learn:

- + to adapt to new situations and solve problems
- + make decisions based on evidence
- + evaluate the impact of scientific developments on health and wellbeing, society and the environment

Course content includes:

- + DNA and the genome
- + Metabolism and survival
- + Sustainability and interdependence

Entry requirements

- + Application form and interview

Progression

On completion of this course you may progress onto:

- + Laboratory Science (SCQF Level 6)
- + HNC in relevant subject
- + Degree in relevant subject

Day/Time

Online, with fortnightly drop ins at UHI Moray

Duration

1 year

Higher Chemistry

SCQF Level 6

S5

S6

The study of chemistry is of benefit not only to those intending to pursue a career in science, but also to those intending to work in areas such as the food, health or manufacturing industries. This course will allow you to develop a deeper understanding of the central concepts of chemistry.

An experimental and investigative approach is used to develop knowledge and understanding of chemical concepts, with knowledge of chemical apparatus and techniques being a key course component.

You will:

- + develop your curiosity, interest and enthusiasm for chemistry in a range of contexts
- + develop skills in scientific inquiry and investigation
- + develop an appreciation of the impact of chemistry on their everyday lives
- + apply your knowledge and understanding of chemical concepts in practical situations
- + think analytically, creatively and independently to make reasoned evaluations
- + choose your own topic for assignment

Entry requirements

- + Application form and interview

Progression

On completion of this course you may progress onto:

- + Laboratory Science (SCQF Level 6)
- + HNC in relevant subject
- + Degree in relevant subject

Day/Time

Online, with fortnightly drop ins at UHI Moray

Duration

1 year

Higher Human Biology

SCQF Level 6

S5

S6

This course enables you to develop and apply knowledge and understanding of human biology, and an understanding of human biology's role in scientific issues and relevant applications of human biology, including their impact on society and the environment.

You will also develop scientific inquiry and investigative skills, as well as scientific analytical thinking skills, including scientific evaluation, in a human biology context.

Entry requirements

- + Application form and interview

Progression

On completion of this course you may progress onto:

- + Laboratory Science (SCQF Level 6)
- + HNC in relevant subject
- + Degree in relevant subject

Day/Time

Online, with fortnightly drop ins at UHI Moray

Duration

1 year

PDA Modern Science Technology

SCQF Level 7

S6

This PDA will enable you to gain experience in microbiology, cell biology and biotechnology.

You will:

- + learn about a variety of current and up-to-date techniques in a modern laboratory environment
- + gain viable practical skills that will support you in further education or employment
- + discover the ethics behind current biotechnologies
- + get a head start in key practicals in a modern laboratory

Progression

On completion of this course you may progress onto:

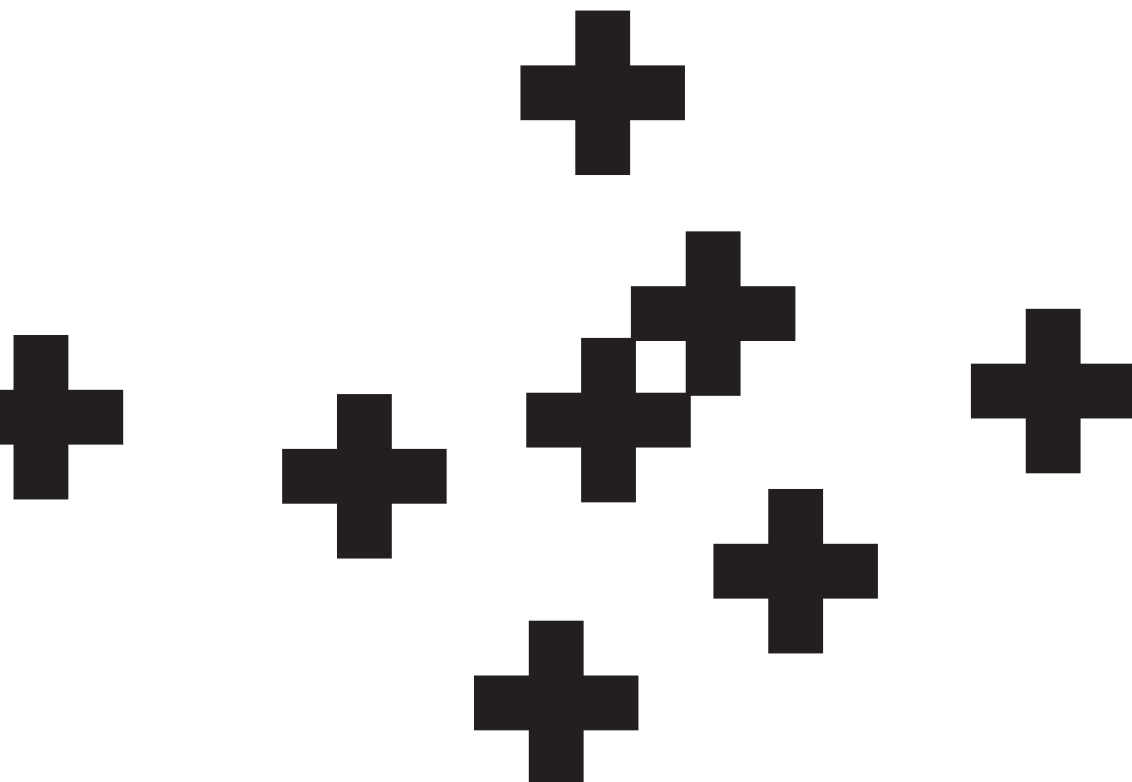
- + HNC Applied Science

Day/Time

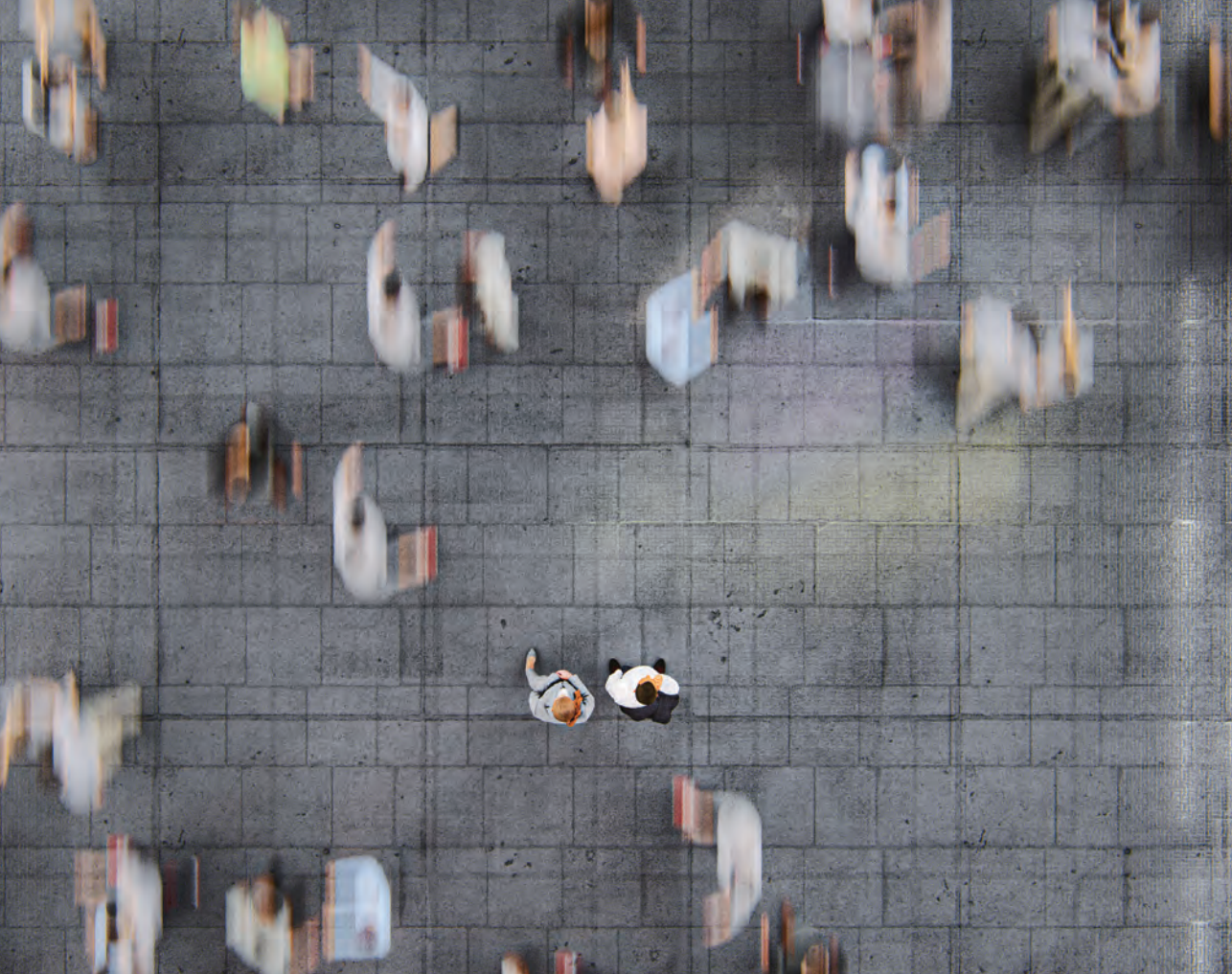
Wednesday 9.30am - 2.15pm

Duration

1 year







Social Sciences

Interests

Politics

**Culture
and Heritage**

Criminology

Society

Psychology

**History and
Archaeology**

Humanities

Theology

National 5 Psychology

SCQF Level 5

S4

S5

S6

This course is ideal if you have an interest in developing your knowledge and understanding of human behaviour. Throughout your studies you can choose to focus on a range of topics in psychology.

You will:

- + gain an insight into individual and social behaviour
- + find out the ways that thoughts and the environment can affect how we feel and behave
- + investigate psychological theories and relevant concepts
- + develop knowledge and understanding of factors to consider when planning and carrying out psychological research

Course content includes:

- + Research
- + Individual behaviour
- + Social behaviour

Entry requirements

- + Application form and interview

Progression

On completion of this course you may progress onto:

- + Higher Psychology

Day/Time

Wednesday 9.30am - 2.15pm

Duration

1 year

Higher Psychology

SCQF Level 6

S5

S6

This course is ideal if you want to learn about the way we live and interact with other people, how we pick up on different signals, how we remember things and why we forget.

You will:

- + develop a good understanding of the way that people behave in society, and how we form attitudes towards obeying rules and conforming to the majority
- + learn about childhood influences, and what makes people different.
- + develop key transferable skills in analysis, interpretation, evaluation and research

Course content includes:

- + Research
- + Individual Behaviour
- + Social Behaviour

Entry requirements

- + National 5 Psychology OR
- + 1 Higher

Progression

On completion of this course you may progress onto:

- + HNC Social Sciences (with qualification at grade C or above)

Day/Time

Wednesday 9.30am - 2.15pm

Duration

1 year

Higher Sociology

SCQF Level 6

S5

S6

This course will help you gain an understanding of human social behaviour. Throughout the course you will develop a knowledge and understanding of sociological concepts, theories and methods and their distinctive approach to the analysis and explanation of areas of society, such as social class, education, the family, crime and deviance, welfare and poverty and the mass media. You will gain the ability to analyse and evaluate sociological arguments, evidence and research methods in a critical way.

Course content includes:

- + Human society
- + Culture and identity
- + Social issues

Entry requirements

- + National 5 English and a social subject

Progression

On completion of this course you may progress onto:

- + HNC Social Sciences (with qualification at grade C or above)

Day/Time

Wednesday 9.30am - 2.15pm

Duration

1 year

NPA Criminology

SCQF Level 6

S5

S6

Criminology is the scientific study of crime including its causes, responses by criminal justice system and methods of prevention. This course is a collection of modules examining different aspects of Criminology.

Course content includes:

- + Nature and Extent of Crime
- + Crime Control Strategies
- + Forensic Criminology

Entry requirements

- + National 5 English and a social subject
- + Ideally you will also have a Higher

Progression

On completion of this course you may progress onto:

- + HNC Social Sciences (with National 5 English qualification at grade A)

Day/Time

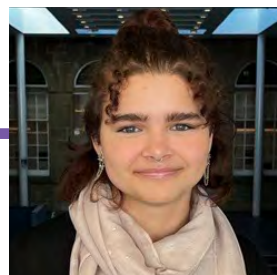
Wednesday 9.30am - 2.15pm

Duration

1 year

I did the National 5 in previous years and wanted to go more in-depth, so I picked the Higher. I like looking at how the brain works and I'm interested in learning more about sleep and dreams, topics like how your body moves in correlation with your dreams.

The teaching is different from school, active learning and more adult environment. It gives a good insight into what further or higher education will be like.



Maija Jones
Forres Academy S6
Higher Psychology

PDA Psychology

SCQF Level 7

S6

This course is ideal if you have an interest in finding out about the human mind and behaviour. The PDA in Psychology explores the historical development of psychology since the 19th Century, the four major schools of thought that have influenced development, and the famous psychologists who have shaped the discipline.

You will build the skills and knowledge needed to progress to a higher level of study or into employment.

Course content includes:

- + Psychology A: History and development of psychology
- + Psychology B: Explanation and research of psychological topics

Entry requirements

- + National 5 in a social subject OR
- + 1 Higher

Progression

On completion of this course you may progress onto:

- + HNC Social Sciences

Day/Time

Wednesday 9.30am - 2.15pm

Duration

1 year

PDA Sociology

SCQF Level 7

S6

Sociology, as a discipline, has emerged from a historical context of social change. This course provides you with an academic and practical understanding of key social concepts like socialisation and social order and encourages you to question and explore why society is organised the way it is.

This PDA encourages you to consider society, from its origin to its development, and how it's explained by competing perspectives. This is an ideal course if you would like to work in careers which require an understanding of the complex relationship between the individual and society including public service, criminal justice, health, business and advertising.

Course content includes:

- + Sociology A: Introduction to Sociology
- + Sociology B: Applying Sociological Theories and Studies to Sociological Topics

Entry requirements

- + National 5 in a social subject OR
- + 1 Higher

Progression

On completion of this course you may progress onto:

- + HNC Social Sciences

Day/Time

Wednesday 9.30am - 2.15pm

Duration

1 year

PDA Politics

SCQF Level 7

S6

This course is ideal if you are curious about politics, political concepts and theories of the state. Throughout this course you will develop your critical thinking and explore key political concepts like accountability, citizenship, democracy, equality, justice, liberty, power, authority or rights to help you formulate an increased understanding of modern political systems. You will also study some of the political structures within the UK including Westminster and the Scottish Parliament as well as looking at the work of pressure groups in our society.

Course content includes:

- + Politics A: An Introduction to Political Theories of the State
- + Politics B: The United Kingdom and Scotland

Entry requirements

- + National 5 in a social subject OR
- + 1 Higher

Progression

On completion of this course you may progress onto:

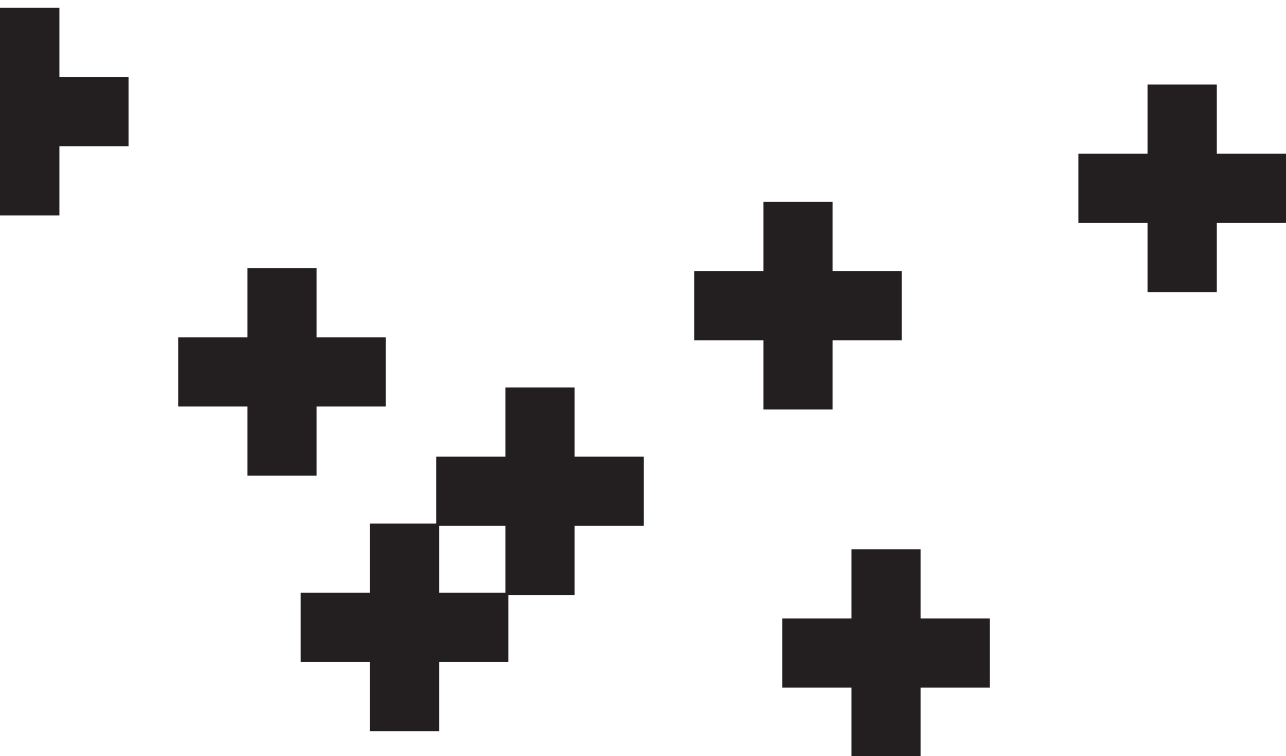
- + HNC Social Sciences

Day/Time

Wednesday 9.30am - 2.15pm

Duration

1 year







Sport and Fitness

Interests

Competition

Training

Sport

Health

Fitness

Physical Activity

Injury Prevention

Exercise

Well-being

Skills for Work: Uniform Services

SCQF Level 4

S4

S5

S6

This course will give you good all-round knowledge, skills and understanding of the main aspects of the uniformed services industry (police, army, ambulance services, etc.)

The course comprises:

- + Employability skills with uniformed services
- + Participate and evaluate practical activities in relation to chosen profession
- + Understanding the importance of a healthy lifestyle and the physical fitness levels required within the services
- + Risk assessments & dealing with emergencies
- + Understanding the local community and the role people employed within the services play
- + Team working and relevance to the services

The knowledge and experience acquired will not only enable you to work within the Uniformed Services but will also develop transferable skills.

Entry requirements

- + Application form and interview

Progression

On completion of this course, you may progress onto:

- + Access to Sport Fitness and Uniformed Services (January start)
- + Sport and Fitness: Preparing for the Uniformed and Emergency Services
- + Sport and Fitness: College Certificate (SCQF Level 6)
- + HNC Sports Coaching
- + HNC Fitness, Health, and Exercise

Please note: extra qualifications may be required to support entry into these programmes.

Day/Time

Wednesday 9.30am - 2.15pm

Duration

1 year

Developing Leadership in Recreational Sports Activities

SCQF Level 5

S4

S5

S6

This course will provide you with a basic knowledge and understanding of the practical skills required to lead recreational physical activities. You will practice and apply the skills by leading practical activity sessions in a familiar industry setting.

This will include:

- + demonstrating an understanding of the roles and functions of a physical activity leader together with an awareness of health, safety, legal and ethical considerations
- + developing your confidence and demonstrate appropriate organisational and communication skills to lead and motivate participants according to age and stage of development
- + enhancing your employability skills by completing a minimum of two National Governing Body workshops and a 10-hour work-based experience which will require engagement with a local organisation or employer

Entry requirements

- + Application form and interview

Progression

On completion of this course, you may progress onto:

- + Access to Sport Fitness and Uniformed Services (January start)
- + Sport and Fitness: Preparing for the Uniformed and Emergency Services
- + Sport and Fitness: College Certificate (SCQF Level 6)
- + HNC Sports Coaching
- + HNC Fitness, Health and Exercise

You can also enter employment as an Assistant Coach or Coach within the sports industry with the National Governing Body qualifications. Please note: extra qualifications may be required to support entry into these programmes.

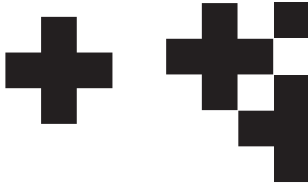
Day/Time

Wednesday 9.30am - 2.15pm

Duration

1 year

Entry requirements and progression routes



Some courses have specific entry requirements. Entry to all other courses will be based on your application form and/or interview.

Senior Phase courses normally run on Wednesdays, and may involve attendance on campus, online study, web based study and/or video conferencing. However some SCQF Level 6 and 7 courses may be offered at alternative times.

Scottish Credit and Qualifications Framework (SCQF)

The SCQF Framework allows you to compare levels across different awards, build a progression route to your desired qualification, and transfer credit from one award to another.

For more information please visit the SCQF website at: www.scqf.org.uk to view the interactive version of the Framework.

SCQF Levels	SQA Qualifications			Qualifications of Higher Education Institutions	Apprenticeships & SVQs
12			↑	Doctoral Degree	Professional Apprenticeship
11				Masters Degree, Integrated Masters Degree, Post Graduate Diploma, Post Graduate Certificate	Graduate Apprenticeship Professional Apprenticeship SVQ
10				Honours Degree, Graduate Diploma, Graduate Certificate	Graduate Apprenticeship Professional Apprenticeship
9				Bachelors / Ordinary Degree, Graduate Diploma, Graduate Certificate	Graduate Apprenticeship Technical Apprenticeship SVQ
8		Higher National Diploma	↑ ↓	Diploma Of Higher Education	Higher Apprenticeship Technical Apprenticeship SVQ
7	Advanced Higher, Awards, Scottish Baccalaureate	Higher National Certificate		Certificate Of Higher Education	Modern Apprenticeship SVQ
6	Higher, Awards, Skills for Work Higher				Modern Apprenticeship Foundation Apprenticeship SVQ
5	National 5, Awards, Skills for Work National 5				Modern Apprenticeship SVQ
4	National 4, Awards, Skills for Work National 4	National Certificate	National Progression Award		SVQ
3	National 3, Awards, Skills for Work National 3				
2	National 2, Awards				
1	National 1, Awards				

Scottish Qualifications Authority (SQA)

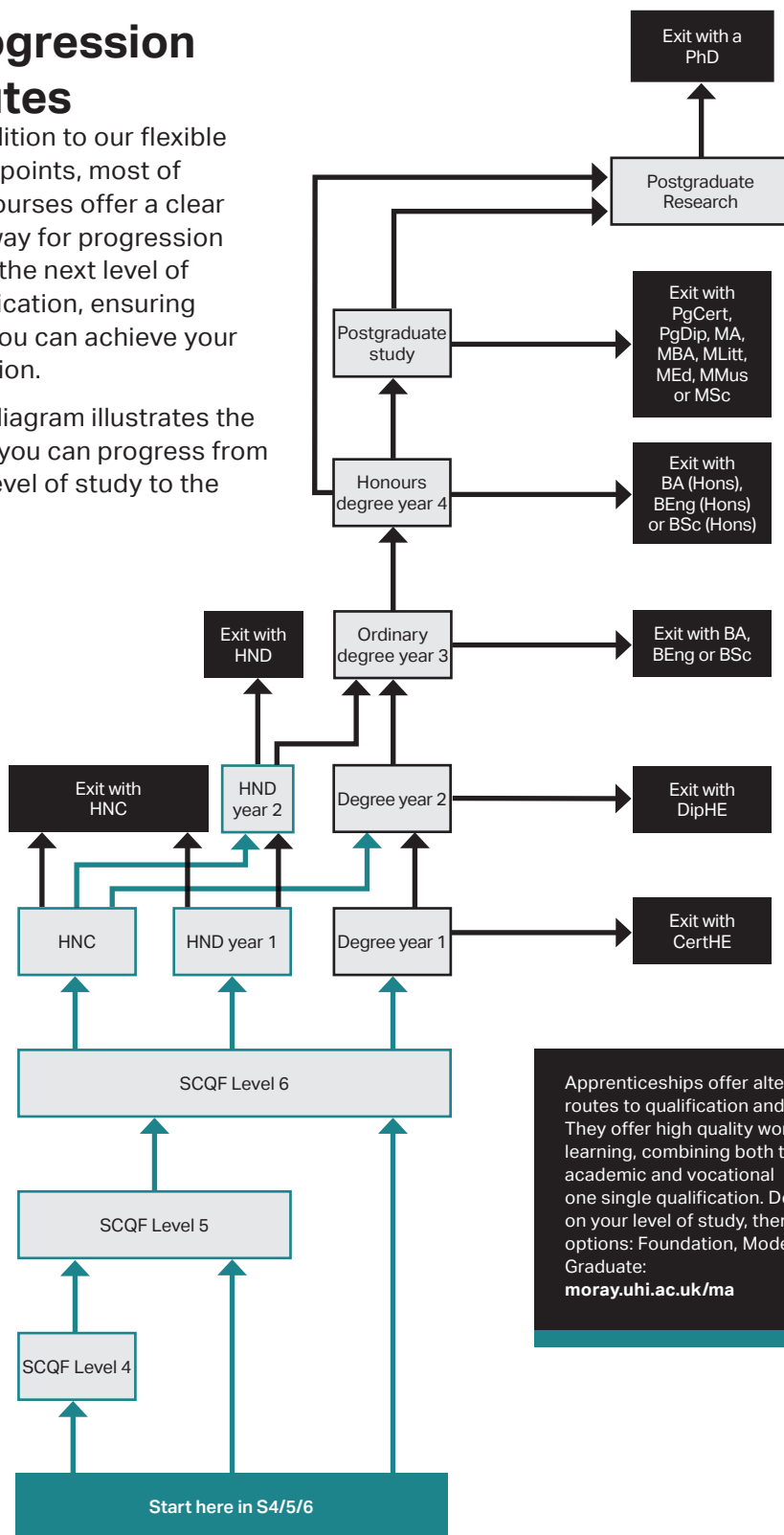
The SQA is the public body responsible for accrediting educational awards in Scotland. The table shows the levels and credit points for SQA units, courses and group awards.



Progression routes

In addition to our flexible entry points, most of our courses offer a clear pathway for progression on to the next level of qualification, ensuring that you can achieve your ambition.

This diagram illustrates the ways you can progress from one level of study to the next.



Apprenticeships offer alternative routes to qualification and employment. They offer high quality work-based learning, combining both the best of academic and vocational learning in one single qualification. Depending on your level of study, there are three options: Foundation, Modern and Graduate:
moray.uhi.ac.uk/ma

How to apply

Once you've decided on a course and discussed it with your Guidance Teacher, you need to submit an application online.

**Applications open
10th January 2024.**

- 1** Visit www.moray.uhi.ac.uk/schools
- 2** Click on **HOW IT WORKS**
- 3** Choose your course
- 4** From the Course information click **APPLY NOW**
- 5** If you are an **EXISTING** student - login with your personal email

If you are a **NEW** student click **CREATE ACCOUNT**
- 6** Complete your application with detailed personal statement and any qualifications you have gained and are undertaking
- 7** Submit your application by 8th March to be guaranteed an interview, late applications will be considered after the first round of interviews



What our students think

In my senior years at school, I chose the uniform services course as I was set on joining the RAF as a Police Dog Handler. The course was great at giving me lots of info I needed. The following year I did the level up; Developing Leadership, as I wanted to do more sport as I love martial arts. This course inspired me to take a different career path, I now want to be a PT in the RAF to help people get and stay fit whilst travelling the world.

I feel the courses gave me a head start as I was familiar with the college, the lecturers, and the teaching style. The advantage of the staff knowing you is that they can best advise on pathways.

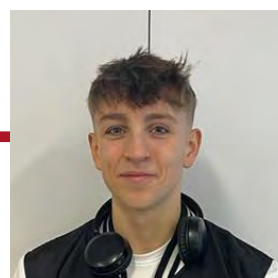
I was initially going to apply for Level 5, but Stephen believed I was capable of the HNC, and this motivated me to pass my exams and to get the entry requirements.



Aimee Breed
Lossiemouth High (Graduate)

**Uniform Services/
Developing Leadership**

I've had an interest in fitness over the past 3 to 4 years, so decided to take the HNC which has expanded my knowledge in nutrition, the anatomy and how the body works.



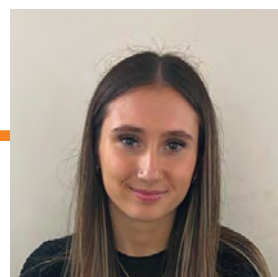
Callum Hunter
Forres Academy (graduate)

Uniform Services

I choose this course as I like doing hair and think I want to do Hairdressing after school, I am still going to do my Highers as I am still unsure.

I have learned new skills using electricals, products for hair and the different hair types.

These are skills I can use in my everyday life, even if I don't decide not to do Hairdressing.



Alix Phimister
Buckie High School S5

Intro to Hairdressing

Moray Street Campus

Based next to the town centre in Elgin, our Moray Street campus is home to the majority of our students.

What's on Campus?

Social Spaces

Looking for somewhere to relax, socialise or simply study? Our social spaces include:

+ AyePod

Our main social space, the AyePod features comfy seats, a pool table and vending machines.

+ The Quad

Perfect during the warmer weather and hidden in the middle of the campus, the Quad is the ideal spot to get some much-needed fresh air, explore the vegetable garden and relax.

+ AGBC Café

When not in use for conferences, the AGBC Café is a nice spot to eat lunch, meet friends and people watch right next to our main Reception.

+ Upper Reception

The perfect place to study and unwind, the upper reception social space on the first floor features comfy seats and plenty of desk space for laptops.

The Fitness Suite

We have our very own gym right here on campus used as a training facility by our sport and fitness students.

There's also a games hall for indoor sports and fitness classes, open to the general public.

Salons and clinics

Our state-of-the-art training salons are the focus for our students in Hairdressing, Beauty Therapy and Complementary Therapies.

Open to the public they offer a range of treatments at educational-friendly prices.

- + Our Hairdressing salons have 'Wella Centre of Excellence' status.
- + Our Beauty Therapy salons are an Eve Taylor and Jane Iredale approved centre.
- + Our Complementary Therapies clinics offer treatments such as massage, aromatherapy, stone therapy and seated massage, and are the base for our one of a kind degree in Integrative Healthcare.

Everyone's welcome.

Where to eat?

The Little Lunchbox at the Refectory

Curly fries anyone? Located next to the Aye Pod our Refectory is open daily offering a selection of hot and cold meals, drinks and tasty treats provided by local favourite The Little Lunchbox.



Out of the Darkness Theatre Company

Our unique partnership sees Out of the Darkness Theatre Company (ODTC) deliver our performing and creative arts courses which prepare students for creative careers in their specific art forms or alternative employment within arts management, teaching and social professions. When you study a performing and creative arts course with us, you get to enjoy all our campus facilities with the expertise and support of ODTC.

Students benefit from real work experience opportunities throughout their studies. The annual Pantomime sees students plan, produce, and perform in their own musical theatre production. ODTC's strong industry links with organisations such as Findhorn Bay Arts and Frozen Charlotte allow students to practice their skills in various events and plays across Moray.

Where to eat?

ODTC is located within easy walking reach of our Moray Street campus. Local supermarkets such as ASDA, The Food Warehouse, Lidl, Tesco, Aldi and our town centre are all a short walk away.

Linkwood Technology Centre

Located in New Elgin, our Linkwood campus is home to our engineering, construction and motor vehicle repair and maintenance provision.

What's on Campus?

Social Spaces

Whether you're looking for somewhere quiet to study or a place to chat with friends, we've got you covered:

+ Study Area

Our study area on the first floor features computers and plenty of desk space for laptops and textbooks.

+ The Refectory

You can enjoy a game of pool or relax with friends between classes at our on-site Refectory.

Workshops

Our facility includes a large, covered project area for all-weather building work as well as:

- + Mechanical Engineering workshop including lathes, milling, grinding, fabrication and welding machines
- + Motor vehicle repair workshop
- + Equipped brickwork, carpentry and joinery, plumbing and electrical workshops

Labs

Alongside our workshops, the campus also includes a number of computing suites and laboratories including:

- + An Engineering Mechanics/Materials laboratory featuring materials testing facilities
- + A CADD suite equipped with industry standard software and 3D printers for rapid prototyping
- + A dedicated pneumatic systems and control systems testing training laboratory



Where to eat?

The Little Lunchbox at the Refectory

Curly fries anyone? Like its Moray Street counterpart, this Refectory is open daily offering students a selection of hot and cold meals, drinks and tasty treats provided by local favourite The Little Lunchbox.

YOUR STUDENTS' ASSOCIATION



As a UHI Moray student you are automatically a member of the Highlands and Islands Students' Association (HISA), also known as Your Students' Association.

HISA have several roles, but improving your student experience is at the heart of everything they do.


They offer representation and advocacy for around 30,000 students across UHI. The team also organises a wide range of events and can help you to set up clubs and societies at your campus.

So if you need information or advice, have a great idea to share, or want to put your hand up to represent your peers, please get in touch!

 hisa.uhi.ac.uk

 hisa@uhi.ac.uk

 [@YourSAatUHI](https://www.facebook.com/YourSAatUHI)

 [@YourSAatUHI](https://twitter.com/YourSAatUHI)

 [@YourSA_PerthMoray](https://www.instagram.com/YourSA_PerthMoray)

Student Support

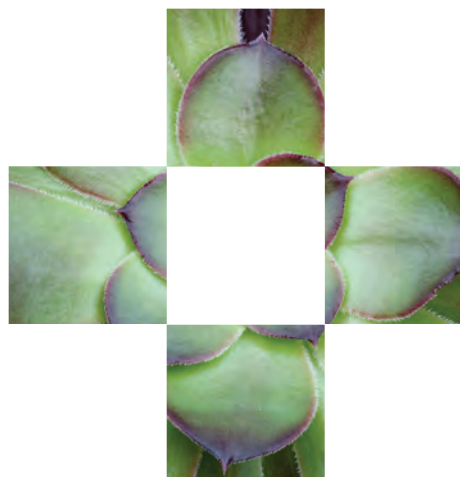
Starting college or university can feel daunting, but we're here to try and help you settle in quickly.

We aim to create a positive and inclusive environment for all students at UHI Moray. We're proud of the support we offer to help students in their learning.

Student Services Centre

The Centre acts as a hub of student activity, and your first port of call for help with everything from registration to graduation and beyond. Within or through the Centre you can access a wide range of resources, including:

- + Student Support
- + Library and Learning Resources
- + Career Support
- + Study Support
- + The Study Bar
- + Mental Health and Well-Being Support



Services offered

Opening Times

Monday - Friday, 8.45am - 4.30pm

(Holiday hours:

Monday - Thursday, 9am - 4pm, closed Friday)

Last enquiries 15 minutes before closing.

Student Support

Our dedicated Student Services team provide personalised support for all applicants and will support you throughout your student journey.

Staff here can give you advice and guidance on courses, careers, accommodation and other issues.

Student Guidance

The Student Guidance team offers friendly, confidential support for everyday problems.

Here you'll find a safe place to discuss any troubles you may have, from academic challenges to personal issues, money problems and health worries.

The team can provide help with career planning, CV writing and interview preparation.

For more information visit moray.uhi.ac.uk/support

Carers and care leavers

Careers and care leavers get tailored support before, during and after your studies.

Our Student Services team have experience of working with people from varied backgrounds, and we partner with external organisations and charities, including the Quarriers and Become, to offer help to carers, young people living in care and those leaving care.

Library and Study Spaces

Sited over two floors, the Student Services Centre is a great place to study and features study pods, group work areas, computer workstations and access to laptops with Wi-Fi.

Our library offers a huge range of books, journals, e-books and other media. Plus as a student, you can request books from other libraries within UHI's partnership through an inter-site loan system.



Study Support

We recognise that all our students benefit from some kind of support, and that different people need to be supported in different ways. Our Inclusive Learning Team aims to support you to achieve your qualifications.

Help available

The Study Bar

The Study Bar is an innovative resource available to all students at UHI Moray and is here to ensure that you make the most of your potential.

As the name suggests, this is the place to perfect your writing style or study strategy, with support from our friendly and helpful team offering a range of learning support services.

The Study Bar staff are available*:

- + Moray Street campus, Monday to Friday,
- + 9am to 4pm
- + Linkwood Technology Centre, Tuesday and Thursday, 9am - 12pm

You can ask a question or book a session by emailing TheStudyBar.Moray@uhi.ac.uk

Alternative Assessment

If you need specific support in assessments and exams, such as scribes and interpreters, our Inclusive Learning Team can help you.

Help for students with disabilities

We're committed to helping all our students achieve their potential, including those with disabilities of all kinds.

If you feel you need additional support because of a disability, contact our Inclusive Learning Team to find out about the help we can help.

Loan Equipment

As a student you may be entitled to additional funding for equipment to help you study, and we can help with this.

We have a wide range of including laptops, ergonomic mice and keyboards, Dictaphones and software which are all available through our equipment loan bank facility.

For more information visit moray.uhi.ac.uk/support

*subject to change



Mental Health and Well-Being

Adjusting to life as a student; dealing with coursework, exams and being away from home for the first time can be potentially stressful and may intensify any pre-existing conditions.

Being a student can also be very beneficial for your well-being; keeping you connected to your peers and friends, expanding your knowledge and opportunities and provides structure and routine to your days.

At UHI Moray we are aware of the stigma surrounding mental health and understand this can prevent a student from disclosing or engaging with additional support which is why we have a range of support available to you during your studies with us.

Counselling Service

Our Counselling Service offers you a professional and friendly place to go in order to discuss your problems further and receive support and assistance.

You can make an appointment with one of the Student Guidance Staff and, from here, you'll be put in touch with a counsellor for discrete and confidential advice.

NHS Healthpoint

The NHS Healthpoint is a free drop-in service available to all students and staff where you can get advice and support on a number of health concerns, such as contraception, mental health, support to stop smoking, long term conditions such as diabetes, and much more.

The service usually takes place:

- + Wednesdays, 9.30am - 12.30pm and 1pm - 2.30pm in the AGBC Community Hub at the Moray Street campus
- + Every first Wednesday of the month from 8.30am - 12.30pm at Linkwood Technology Centre

The Well-Being Bar

Our Well-Being Bar supports our student's mental health and well-being.

We run well-being sessions throughout the year and can refer you to our counselling service or other organisations such as the Moray Wellbeing Hub.

Other Support

As a UHI student, you will have access to a range of external services including:

- + 24/7 out of hours mental health support line via Spectrum. Life. All calls are answered by clinically trained counsellors or psychotherapists.

Visit moray.uhi.ac.uk/mentalhealth for a full list of support.



Careers and employability

At UHI we are not just concerned with helping you to achieve success in the academic world, but also in translating your academic achievement to success in the working world.

Over the course of our lives, we all make multiple career decisions. You will not leave university as the finished article so, in a world that changes constantly, we understand that you might be unclear about your future. However, we are here to support you throughout your studies and think about what the future might hold for you.

In order to do this we provide all students with a range of careers and employability services.



+ Advice and support services

Every campus has staff who can help you with careers and employability questions.

In addition, careers information, advice and guidance is available to all students through the Careers and Employability Centre using the FutureMe careers portal. Our services are not only available to you while you are a student: as a graduate you will have access to our services for life, helping you to manage and navigate your post-university career.



I am a student



I am a graduate



I am an employer

Career development services offered by the centre include:

- one-to-one consultations with career advisers, either through telephone, email, or video conference
- a Job Shop including details of graduate jobs, internships, placements, and volunteering opportunities
- CV and application form feedback
- mock interviews (by telephone or video conference)
- workshops and seminars (offered online and face-to-face)
- careers and labour market information

FutureMe

*Helping you look up, look forward
and be in the know*

Further information about all of our services is available through FutureMe at: uhi.ac.uk/careers

**First class
career advice
and support
services**



**Access to
placement and
work experience
opportunities**



**A course of academic learning
structured to enable you to
develop employability skills,
alongside academic expertise**



+ Working for you

The Careers and Employability Centre works with both national and local employers to promote our students and generate job vacancies for our graduates. Our strong employer links also allow us to provide advice and guidance services that are responsive to the labour market.

+ Work experience and placement opportunities

Depending on the course you choose, you may have access to a structured work placement as part of your studies. Alternatively, you may choose to apply for a placement or internship advertised by the Careers and Employability Centre, or you may wish to seek voluntary work or work experience. We can help you to identify the options that suit you.

+ Your course and skills for employment

Feedback from employers suggests that alongside evidence of study and work experience, certain skills are also required of graduates. Our courses are structured to enable you to develop these graduate attributes for employment, including communication, self-management, interpersonal skills, and social awareness.

+ A final comment

We encourage all our students to start thinking about their career and employability early in their course and to engage with the Careers and Employability Centre. By getting advice, obtaining information, gaining experience, and connecting with people, you increase the likelihood that you will end up somewhere you want to be (even if it's not the place you originally envisaged!).

Further information about all of our services is available through our website:
uhi.ac.uk/careers



GLOSSARY

SfW	Skills for Work
NC	National Certificate
NQ	National Qualification
NVQ	National Vocational Qualification
SVQ	Scottish Vocational Qualification
HNC	Higher National Certificate
HND	Higher National Diploma
PDA	Professional Development Award
NPA	National Progression Award
SCQF	Scottish Credit and Qualifications Framework
FAQs	Frequently Asked Questions
FA	Foundation Apprenticeship
MA	Modern Apprenticeship
BA	Bachelor of Art degree
BSc	Bachelor of Science degree
BEng	Bachelor of Engineering degree
Hons	Degree with Honours, e.g. BSc (Hons)
PGDE	Professional Graduate Diploma in Education

Disclaimer

Published by UHI Moray, Registered Scottish Charity No. SC021205.

Registered office: Moray Street, Elgin, Moray. IV30 1JJ

© UHI Moray 2023. No part of this publication may be reproduced without the written permission of the University of the Highlands and Islands.

'University of the Highlands and Islands', 'UHI', their Gaelic equivalents and the UHI brand marque are all trademarks and/or registered trademarks of the University of the Highlands and Islands.

All photographs and images used in this prospectus are protected by copyright and may not be reproduced without permission.

Thank you to all students and staff who helped in the production of this prospectus.

We have made every effort to ensure that the information in this prospectus is accurate at the time of going to press. Inevitably, because of the extended lead time of prospectus production, changes to course information may occur and we will endeavour to reflect any such changes as quickly as possible on our website: **moray.uhi.ac.uk**

A-Z course listing

			Available to year(s)			Page
A						
Acting and Performance	NPA	SCQF Level 6	S5	S6		20
Automotive	Foundation Apprenticeship	SCQF Level 4	S4	S5	S6	26
B						
Bakery	NPA	SCQF Level 4	S4	S5	S6	36
Beauty Therapy		SCQF Level 4	S4	S5	S6	32
Biology	National 5	SCQF Level 5	S4	S5	S6	40
Biology	Higher	SCQF Level 6		S5	S6	41
British Sign Language		SCQF Levels 4/5	S4	S5	S6	12
Business & Finance	PDA	SCQF Level 7			S6	14
Business Skills	Foundation Apprenticeship	SCQF Level 6		S5	S6	14
C						
Chemistry	National 5	SCQF Level 5	S4	S5	S6	40
Chemistry	Higher	SCQF Level 6		S5	S6	42
Construction Skills	Foundation Apprenticeship	SCQF Level 4	S4	S5	S6	18
Creative & Digital Media	Foundation Apprenticeship	SCQF Level 6		S5	S6	20
Criminology	NPA	SCQF Level 6		S5	S6	47
Cyber Security	NPA	SCQF Level 5	S4	S5	S6	16
D						
Developing Leadership in Recreational Sports Activities		SCQF Level 5	S4	S5	S6	52
Digital Media	NPA	SCQF Level 5	S4	S5	S6	16
E						
Early Education & Childcare	Skills for Work	SCQF Level 4/5	S4	S5	S6	22
Engineering	PDA	SCQF Level 7			S6	27
English for Speakers of Other Languages (ESOL)	National 5	SCQF Level 5	S4	S5	S6	30
English for Speakers of Other Languages (ESOL)	Higher	SCQF Level 6	S4	S5	S6	30
Environmental Science	National 5	SCQF Level 5	S4	S5	S6	41

G

Getting Ready For a Career In Teaching		SCQF Level 67			S6	23
--	--	---------------	--	--	----	----

H

Hairdressing - Introduction		SCQF Level 4	S4	S5	S6	32
Human Biology	Higher	SCQF Level 6		S5	S6	42

M

Modern Science Technology	PDA	SCQF Level 7			S6	43
---------------------------	-----	--------------	--	--	----	----

P

Politics	PDA	SCQF Level 7			S6	49
Practical Engineering		SCQF Level 5		S5	S6	26
Psychology	National 5	SCQF Level 5	S4	S5	S6	46
Psychology	Higher	SCQF Level 6		S5	S6	46
Psychology	PDA	SCQF Level 7			S6	48

S

Social Services (Children and Young People)	Foundation Apprenticeship	SCQF Level 6		S5	S6	22
Social Services & Healthcare	Foundation Apprenticeship	SCQF Level 6		S5	S6	34
Sociology	Higher	SCQF Level 6		S5	S6	47
Sociology	PDA	SCQF Level 7			S6	48
Sports Therapy Fundamentals		SCQF Level 4	S4	S5	S6	38

U

Uniform Services	Skills for Work	SCQF Level 4	S4	S5	S6	52
------------------	-----------------	--------------	----	----	----	----

Want more information?

Give us a call or visit our website:

01343 576000 + moray.uhi.ac.uk

UHI Moray, Moray Street, Elgin IV30 1JJ



@UHI Moray



**Where
learning
means
more**

