

SUPPRESSED

SELECT ⇌

Moray college

Total FE/HE FT/PT = 2,062

50 Suppression Threshold

Moray College 20-21 Performance Indicators

Chart A. Outcomes for FE on recognised qualifications (full-time)

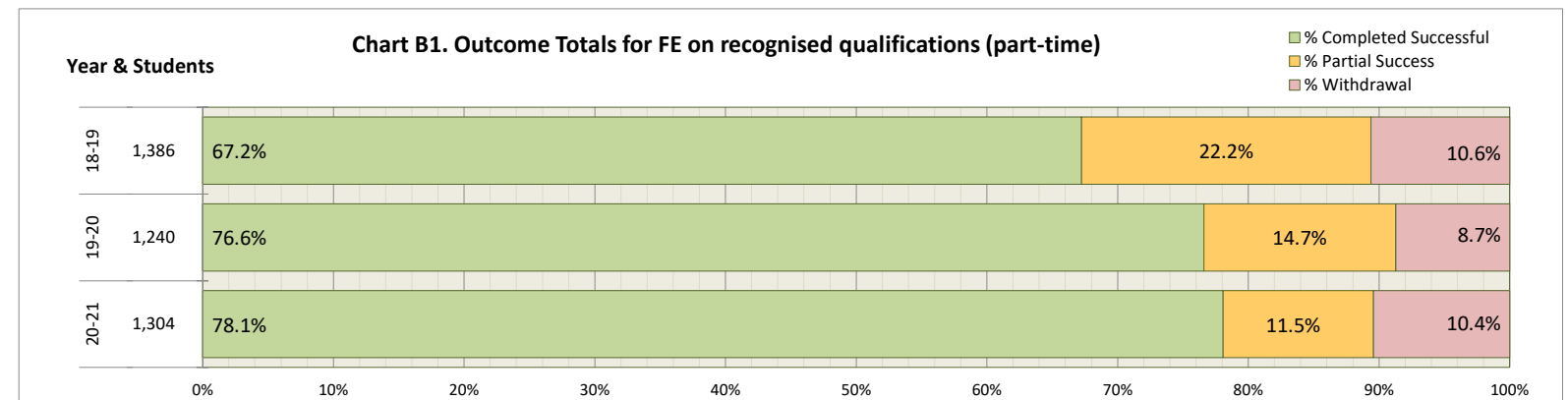
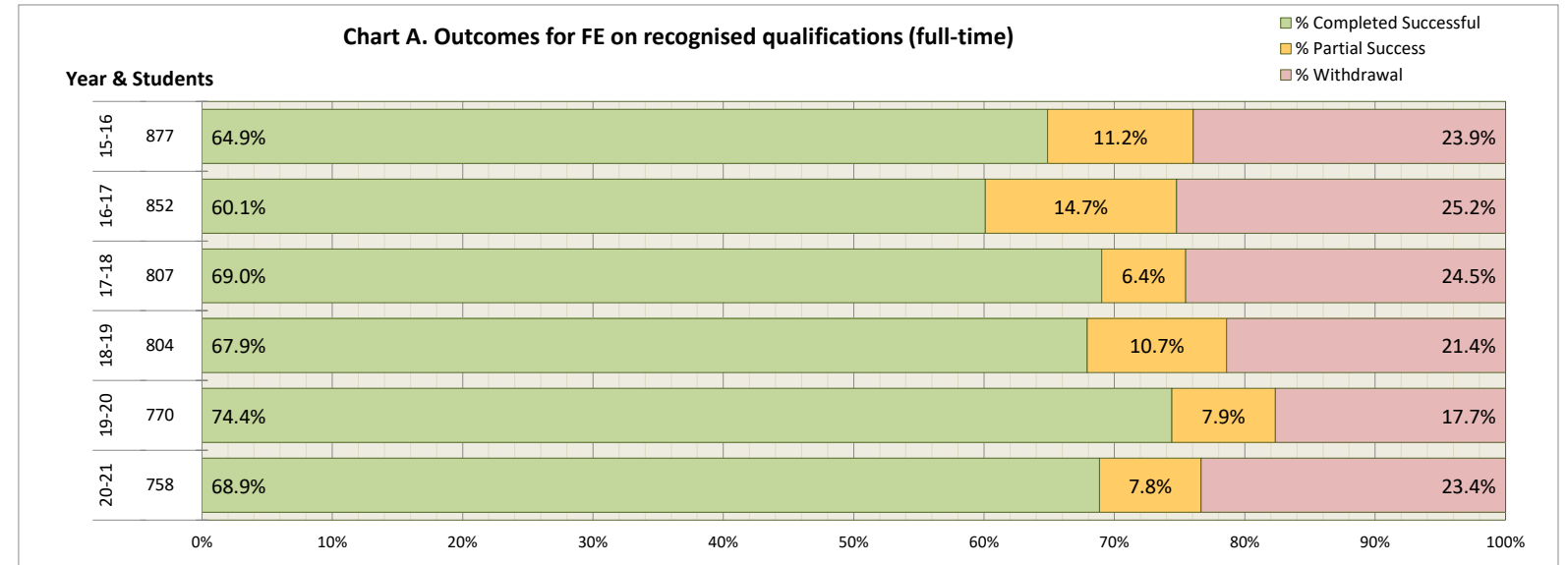
Year		Completed Successful	Partial Success	Withdrawal	Total
15-16	Full Time	569	98	210	877
16-17	Full Time	512	125	215	852
17-18	Full Time	557	52	198	807
18-19	Full Time	546	86	172	804
19-20	Full Time	573	61	136	770
20-21	Full Time	522	59	177	758

Year		% Completed Successful	% Partial Success	% Withdrawal	Total
15-16		64.9%	11.2%	23.9%	877
16-17		60.1%	14.7%	25.2%	852
17-18		69.0%	6.4%	24.5%	807
18-19		67.9%	10.7%	21.4%	804
19-20		74.4%	7.9%	17.7%	770
20-21		68.9%	7.8%	23.4%	758

Chart B1. Outcome Totals for FE on recognised qualifications (part-time)

Year		Completed Successful	Partial Success	Withdrawal	Total
18-19	Total Part-Time FE	932	307	147	1,386
19-20	Total Part-Time FE	950	182	108	1,240
20-21	Total Part-Time FE	1,018	150	136	1,304

Year		% Completed Successful	% Partial Success	% Withdrawal	Total
18-19		67.2%	22.2%	10.6%	1,386
19-20		76.6%	14.7%	8.7%	1,240
20-21		78.1%	11.5%	10.4%	1,304



Total FE/HE FT/PT = 2,062

Moray College 20-21 Performance Indicators

Chart B2. Outcome Breakdown for FE on recognised qualifications (part-time)

Year		Completed Successful	Partial Success	Withdrawal	Total
18-19	under 10 hours				
	10 up to 40 hours	110	1		111
	40 up to 80 hours	193	24	8	225
	80 up to 160 hours	177	84	19	280
	160 up to 320 hours	361	143	108	612
	320 hours up to FT	91	55	12	158
19-20	under 10 hours				
	10 up to 40 hours				
	40 up to 80 hours	113	69	5	187
	80 up to 160 hours	105	24	15	144
	160 up to 320 hours	536	69	77	682
	320 hours up to FT	136	17	10	163
20-21	under 10 hours				
	10 up to 40 hours	200	1		201
	40 up to 80 hours	203	3	15	221
	80 up to 160 hours	130	19	18	167
	160 up to 320 hours	394	112	98	604
	320 hours up to FT	77	11	5	93

Year		% Completed Successful	% Partial Success	% Withdrawal
18-19	under 10 hours			
	10 up to 40 hours 111	99.1%	0.9%	
	40 up to 80 hours 225	85.8%	10.7%	3.6%
	80 up to 160 hours 280	63.2%	30.0%	6.8%
	160 up to 320 hours 612	59.0%	23.4%	17.6%
	320 hours up to FT 158	57.6%	34.8%	7.6%
19-20	under 10 hours			
	10 up to 40 hours			
	40 up to 80 hours 187	60.4%	36.9%	2.7%
	80 up to 160 hours 144	72.9%	16.7%	10.4%
	160 up to 320 hours 682	78.6%	10.1%	11.3%
	320 hours up to FT 163	83.4%	10.4%	6.1%
20-21	under 10 hours			
	10 up to 40 hours 201	99.5%	0.5%	
	40 up to 80 hours 221	91.9%	1.4%	6.8%
	80 up to 160 hours 167	77.8%	11.4%	10.8%
	160 up to 320 hours 604	65.2%	18.5%	16.2%
	320 hours up to FT 93	82.8%	11.8%	5.4%

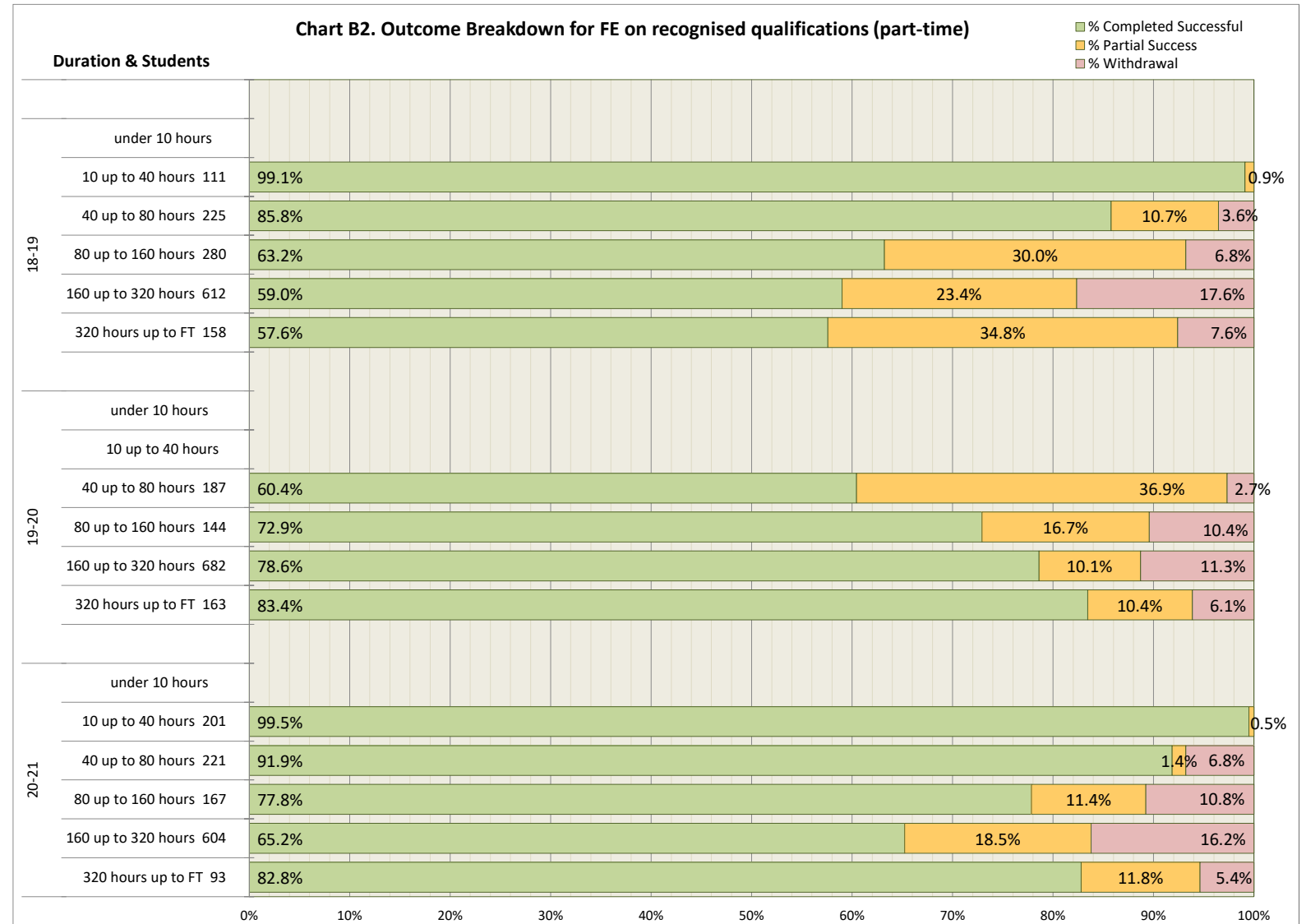
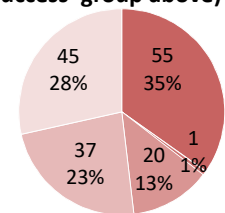


Chart C. Achievement for FE students with partial success

Number of students who complete their course without gaining any units / credits	55	34.8%
Number of students completing their course achieving up to 25% of planned units	1	0.6%
Number of students completing their course achieving 25 to 50% of planned units	20	12.7%
Number of students completing their course achieving 50 to 75% of planned units	37	23.4%
Number of students completing their course achieving at least 75% of planned units	45	28.5%
Total	158	100%

Chart C: Level of achievement for students funded by the SFC completing an FE course of 160 hours or more who did not achieve 'full' success (An overview of the 'Partial Success' group above)

- Number of students who complete their course without gaining any units / credits
- Number of students completing their course achieving up to 25% of planned units
- Number of students completing their course achieving 25 to 50% of planned units
- Number of students completing their course achieving 50 to 75% of planned units
- Number of students completing their course achieving at least 75% of planned units



Total FE/HE FT/PT = 2,062

Chart D. Outcomes by age group on courses lasting 160 hours or more

	Completed Successful	Partial Success	Withdrawal	Total
under 18	496	114	147	757
18-20 year olds	258	31	57	346
21-24 year olds	86	17	24	127
25-40 year olds	113	14	42	169
41 and Over	40	6	10	56

	% Completed Successful	% Partial Success	% Withdrawal
under 18 757	65.5%	15.1%	19.4%
18-20 year olds 346	74.6%	9.0%	16.5%
21-24 year olds 127	67.7%	13.4%	18.9%
25-40 year olds 169	66.9%	8.3%	24.9%
41 and Over 56	71.4%	10.7%	17.9%

Moray College 20-21 Performance Indicators

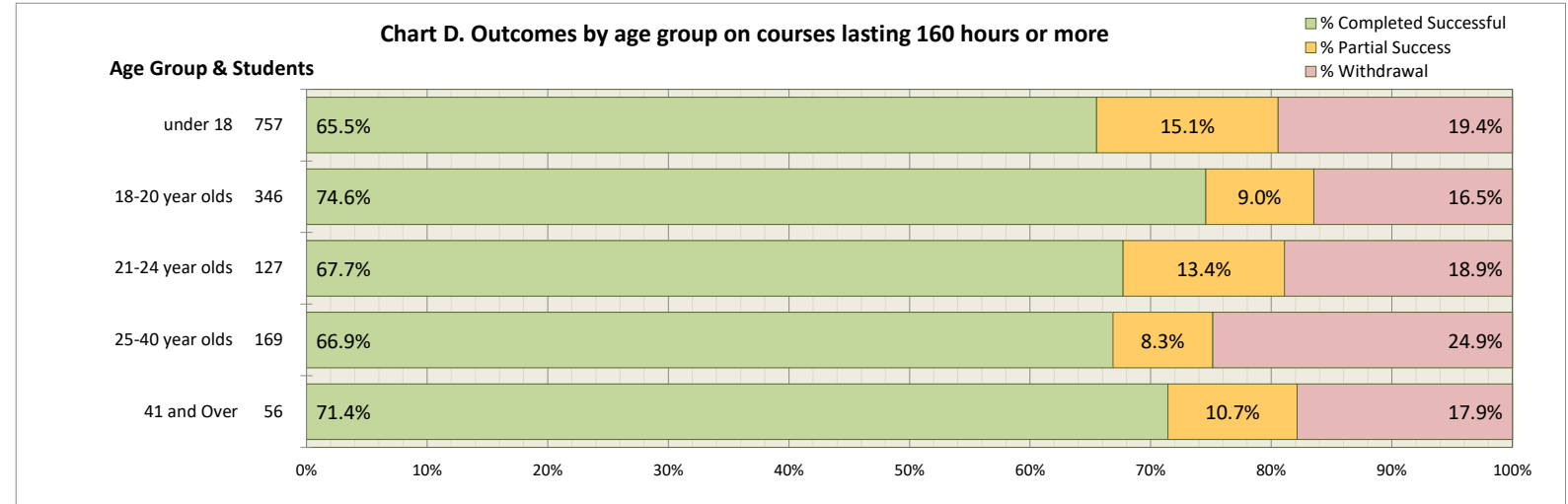
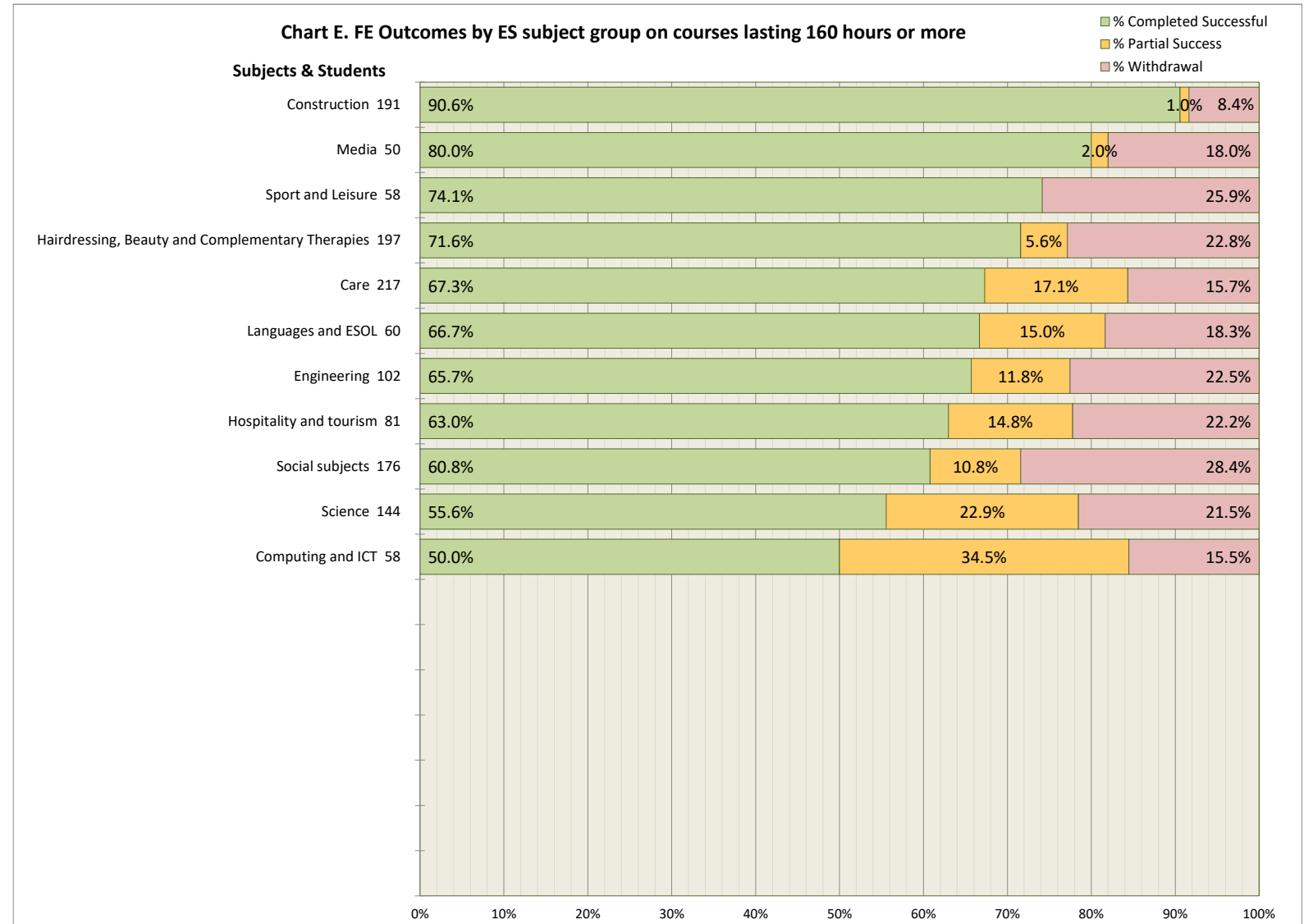


Chart E. FE Outcomes by ES subject group on courses lasting 160 hours or more

	% Completed Successful	Completed Successful	Partial Success	Withdrawal	Total
Sport and Leisure	74.1%	43		15	58
Special Programmes					
Social subjects	60.8%	107	19	50	176
Science	55.6%	80	33	31	144
Performing arts					
Nautical studies					
Media	80.0%	40	1	9	50
Languages and ESOL	66.7%	40	9	11	60
Land-based industries					
Hospitality and tourism	63.0%	51	12	18	81
Hairdressing, Beauty and Complementary Therapies	71.6%	141	11	45	197
Engineering	65.7%	67	12	23	102
Education and training					
Construction	90.6%	173	2	16	191
Computing and ICT	50.0%	29	20	9	58
Care	67.3%	146	37	34	217
Business, Management and Administration					
Art and design					

	% Completed Successful	% Partial Success	% Withdrawal
Construction 191	90.6%	1.0%	8.4%
Media 50	80.0%	2.0%	18.0%
Sport and Leisure 58	74.1%		25.9%
Hairdressing, Beauty and Complementary Therapies 197	71.6%	5.6%	22.8%
Care 217	67.3%	17.1%	15.7%
Languages and ESOL 60	66.7%	15.0%	18.3%
Engineering 102	65.7%	11.8%	22.5%
Hospitality and tourism 81	63.0%	14.8%	22.2%
Social subjects 176	60.8%	10.8%	28.4%
Science 144	55.6%	22.9%	21.5%
Computing and ICT 58	50.0%	34.5%	15.5%

Chart E. FE Outcomes by ES subject group on courses lasting 160 hours or more



Total FE/HE FT/PT = 2,062

Chart F. Outcomes by level and gender on courses lasting 160 hours or more

	Completed Successful	Partial Success	Withdrawal	Total
FE Females	581	106	157	844
FE Males	409	73	120	602
HE Females				
HE Males				

	% Completed Successful	% Partial Success	% Withdrawal
FE Females 844	68.8%	12.6%	18.6%
FE Males 602	67.9%	12.1%	19.9%

Chart G. Outcomes by key group on courses lasting 160 hours or more

	Completed Successful	Partial Success	Withdrawal	Total
All enrolments over 160 hours	993	182	280	1,455
10% Most deprived postcode areas				
20% Most deprived postcode areas				
Fees paid by employer				
Ethnic minority				
Disability	330	87	116	533
Year of study greater than first year	109	10	6	125
Care Experienced	42	17	21	80

	% Completed Successful	% Partial Success	% Withdrawal
All enrolments over 160 hours 1,455	68.2%	12.5%	19.2%
10% Most deprived postcode areas			
20% Most deprived postcode areas			
Fees paid by employer			
Ethnic minority			
Disability 533	61.9%	16.3%	21.8%
Year of study greater than first year 125	87.2%	8.0%	4.8%
Care Experienced 80	52.5%	21.3%	26.3%

Chart H. Credit targets and achieved (core plus ESF where applicable)

	Credits/WSUMs	Year	Percentage
WSUMs achieved	19,146		
18-19 WSUM target	18,807	18-19	101.80%
Credits achieved	17,702		
19-20 Credits target	18,807	19-20	94.12%
Credits achieved	14,365		
20-21 Credits target	19,148	20-21	75.02%

Chart J. Percentage of Full-time permanent teaching staff with a teaching qualification

	Permanent full-time teaching staff	Number with a Teaching Qualification	Year	Percentage
18-19	50	47	18-19	94.0%
19-20	48	46	19-20	95.8%
20-21	44	42	20-21	95.5%

Moray College 20-21 Performance Indicators

